

# DFIRM Appeal and LAMP Current and Future Activities

Joseph N. Suhayda  
January 22, 2019

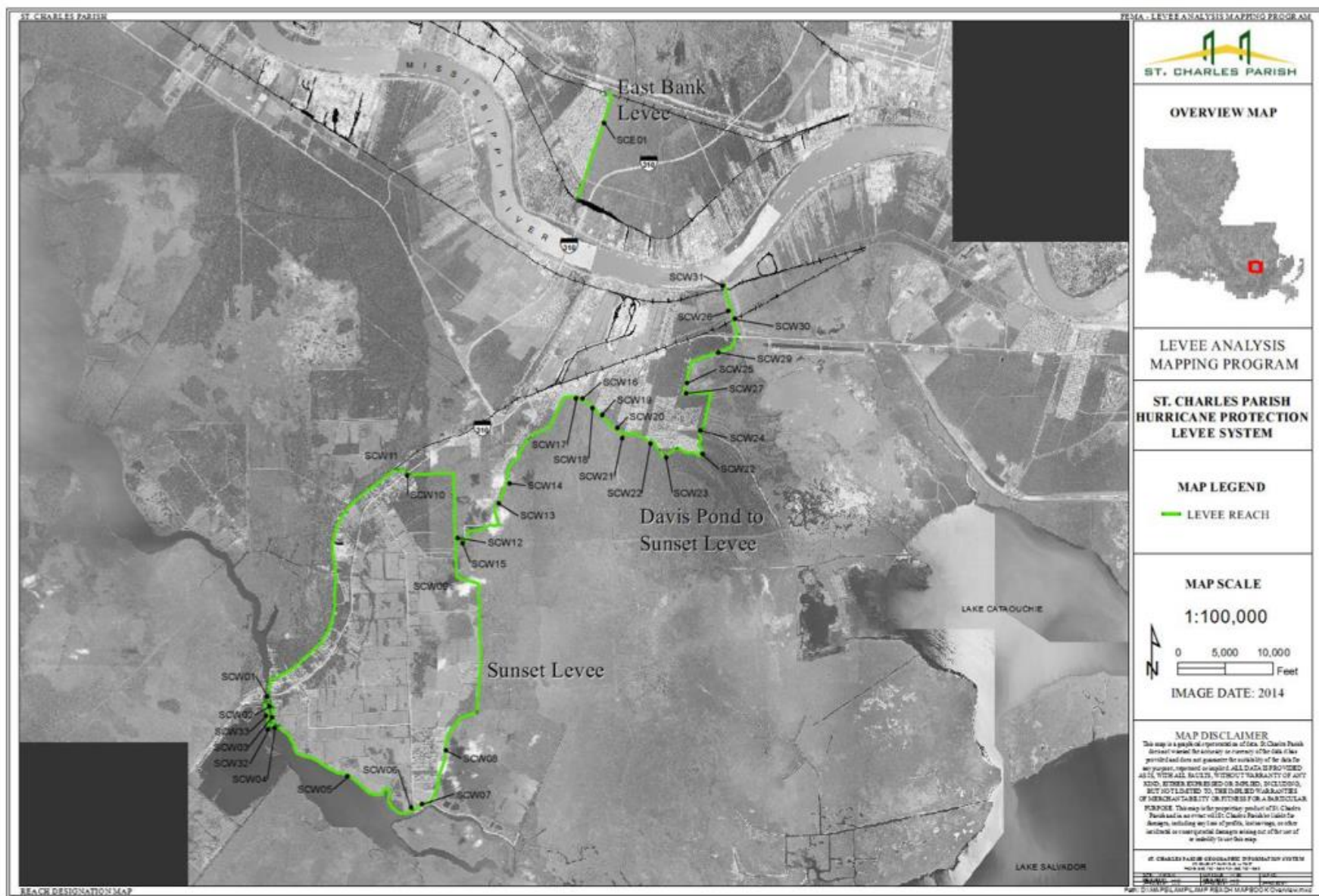


Figure 4 – St. Charles Parish Levee Improvements Plan Including an Interim Closure System (Option 1)



# DFIRM Appeal and LAMP Activities

DFIRM REMAPPING (flooding outside of levees/barriers)

LEVEE ANALYSIS AND MAPPING PROCEDURE (flooding behind  
levees/barriers)

FEMA PREPARES NEW DFIRMS

# Coastal Appeal

Task	Description
1.1	Convert existing Baker WHAFIS results to shapefile (SLLD)
1.2	Map existing Baker WHAFIS results
1.3	Mapping QC
2.1	Review Parish SWEL appeal
2.2	Appeal Resolution Letter
3.1	Review updated WHAFIS analysis from Parish
3.2	Review updated mapping from Parish (seaward of levees)
4.1	Coordinate with Parish on reorienting/adding transects
4.2	Coordinate with Parish on updating carding
4.3	Update WHAFIS transects
4.4	Update WHAFIS carding
5.1	Rerun WHAFIS using new SWEL results (and/or updated carding)
5.2	Map new WHAFIS results
5.3	Mapping QC
6.1	Additional review of submittals
6.2	Additional coordination/outreach/meetings



# Analysis and Mapping Plan

*St. Charles Parish*

*Louisiana*

*08/08/2015*



**FEMA**

**RiskMAP**  
Increasing Resilience Together



The LAMP process is in four phases:

- Phase Zero - Flood Structure Identification and Review: Levee systems are identified and verified to be built, operated, and maintained as flood control structures. A Local Levee Partnership Team is established during this phase.
- Phase One – Analysis and Mapping Plan Preparation: LLPT meetings are periodically held to review available data, documentation, and information. Discussions assist in the preparation of an Analysis and Mapping Plan with suggestions for which analysis and mapping procedures to use based on the data, documentation, and information available.
- Phase Two – Analysis Preparation and Results Review: Analysis is performed by FEMA and shared with the LLPT to validate results against available data, documentation, and information. Results are reviewed against effective Flood Insurance Rate Map (FIRM) panels to update scope of work, if necessary.
- Phase Three – FIRM Update, Due Process and Effective Issuance: FIRM panels are updated with analysis and mapping results. Communities and FEMA proceed through all due process procedures and updated FIRM panels are adopted for local floodplain management purposes.

# LAMP Issues for Phase 2

- Additional Data, Information and Documentation Needed
  - Update data (pg 24 in LAMP Plan)
  - Update Table 5 in the LAMP Plan – Data to be Collected
- Storm Surge Considerations (pg 25 in LAMP plan)
  - Prepare and submit new SWEL data for review
- Coastal Landforms (pg 25 in LAMP plan)
  - Evaluate coastal landforms for inclusion in mapping
- Conduct Freeboard Analysis (pg 25 in LAMP Plan)
- Conduct Overwash Analysis (pg 30 in LAMP Plan)
  - COE procedure, Certified design
- Coordinate with FEMA during Phase 2 Analysis (pg 30 in LAMP Plan)



# Future Activities

ADDITIONAL DATA COLLECTION – 3 mths

FLOOD HAZARD ANALYSIS AND MAPPING – 7 mths

PRELIMINARY DFIRM PRODUCTION – 5 mths

POST PRELIMINARY DFIRM PRODUCTION – 12 mths

TOTAL TIME – 27 mths