

Public Works

2016-2017

Work Orders

- 2016 8591 Work Orders

- 4 Eastbank Road Crews
- 4 Westbank Road Crews
- 3 Drainage Crews
 - 208 work days – approx. 4 Work Orders per day per crew

- 2017 7069 Work Orders

- Since Sept 11th will equate to approx. 10,000 Work Orders

Public Works Organization Changes

- Work Planning Process
 - Weekly work plans due Monday
 - Daily work schedule
 - Overtime justification
 - Monday Actual Work Report
 - Wednesday Planning meetings

Wednesday Planning Meeting

- Project review
 - Review project: updates, status, details, obstacles
- Supervisors meeting
 - Work update and review
 - Work group talent alignment (employee development)
 - Resource alignment (manpower and equipment needs)
 - Project Development

Drainage

| Project: | Manpower: | Equipment: | Duration: | Estimated Start Date: |
|-----------------------------------------------------------|-----------|--------------------------------------------|----------------|----------------------------------------------------|
| Davis barton erosion | 4 guys | excavator, 2 dump truc | 3 days | WILL START AL LATER DATE |
| Ama Pump Station Dewater culvert | 8 GUYS | LONG ARM | 1 DAY | DIGGING THE CULVERT ON THE PUMP STATION SIDE |
| BOX CULVERTS NORCO AN THE DITCH OFF OF AIRLINE HWY | 4 GUYS | EXCAVATOR, DUMP TRUCKS | 8 DAYS | WILL START AT LATER DATE |
| WORK THAT NEEDS TO BE DONE ON THE WIER IN ORMOND | 8 GUYS | EXCAVATOR | 14 DAYS | WILL START ? |
| IN STALLING BOX CULVERTS HACKBERRY STREET LILING | 10 GUYS | 2 EXCAVATORS, CHERRY PICKER AN DUMP TRUCKS | 5 DAYS | DON IS WORKING ON THE PLANS |
| 139 VILLERE LEVEE SLUFF OFF | 6 GUYS | EXCAVATOR AN DUMP TRUCK | 5 DAYS | WILL START AT LATER DATE |
| CLEANING THE HAHNVILLE CANAL NORTH OF 3127AN WEST OF 3160 | 2 GUYS | LARGE MARSH BUGGY | 120 DAYS MAYBE | ONGING |
| HACKBERRY CANAL- DIGGING THE CANAL | 10 GUYS | EXCAVATOR | 30 DAYS | WILL INSTALL SHEET PILLENS AS SOON AS THEY ARE CUT |
| CLEAN CORTEZ CANAL | 6 GUYS | EXCAVATOR BOB CAT AN DUMP TRUCK | 21 DAYS | STARTED 9-11-17 |
| UPPER GUIDELEVEE CANAL | 2GUYS | SMALL MARSH BUGGY | 45 DAYS | ONGOING |
| CLEANING THE CANAL ALONG AIRLINE HWY IN ST ROSE | 8 GUYS | EXCAVTOR AN 3 DUMP TRUCKS | 10 DAYS | NEEDS TO BE DUG ON THE NORTH SIDE OF AIRLINE |
| END OF COURT HOUSE LANE | 6 GUYS | EXCAVATOR CHIPPER ? | ?? DAYS | LOOKING TO START AFTER HACKBERRY |
| JOB 51 | 10 GUYS | EXCAVATOR 4 DUMP TRUCKS | 3 DAYS | WILL START TOMORROW |

PUBLIC WORKS DAILY WORK SCHEDULE

EAST BANK ROAD CREWS

October 2,

2017

| <u>AREA</u> | <u>AREA FOREMAN</u> | <u>DESCRIPTION OF WORK</u> |
|--------------------|----------------------------|---------------------------------------------------------------------------------------------------------------------------------------------------|
| 6 | John Fleming | Norco/Montz Out Sick Operator III working with Carpenter Crew on Judy Court Montz rest of crew loading waste tires at E Harding Yard |
| 5 | Curtis Robinson | St. Rose Out Sick crew loading waste tires at E Harding Laydown Yard |
| 1, 2, 3 | Je'Quain Robinson | Destrehan Working at E Harding Laydown Yard loading waste tires |
| 3, 6 | Irvin Fauchaux | New Sarpy Working at E Harding Laydown Yard loading waste tires and cleaning yard. |

Telemetry Group

Thursday, September 17, 2015

9/17/2015

| <u>Employees</u> | <u>Location & Brief Description</u> | <u>Est. Time</u> |
|-------------------------------|---------------------------------------------------------------------------------------------------------------------|------------------|
| Terry Breaux | Working on Waste Water Plant Upgrade. Training | 10 |
| Meme Robbins | Programming for Wastewater Lift Stations. Training | 10 |
| Travis Sequeira | Programming. Training | 10 |
| Wade Dufrene | Programming cameras. Working on drawings. Training | 10 |
| David Williams | Troubleshooting an issues at Tibby Pump Station. Training | 10 |
| Brandon Lowry (Helper) | Assisting at Tibby Pump Station. Training | 10 |
| Andrew Howard | Working on panels at 3127 Lift Station. Training | 10 |
| Dean Champagne (Helper) | Assisting with 3127 Lift Station. Training | 10 |
| Bobby Smith | Ordering parts and working on Electrician's Warehouse inventory. Putting together solar panel. Training | 10 |
| Evan Barbier (Helper) | Assisting with inventory and solar panel. Training | 10 |
| Joe Miller | Generator install at Paradis Pump Station. Troubleshooting issues with engine at Destrehan I Pump Station. Training | 10 |
| Blake Schexnaydre (Helper) | Assisting at Paradis and Destrehan I Pump Stations. Training | 10 |
| Blake Schexnaydre (Helper) | Assisting at Destrehan I Pump Station. | 10 |

Grass Crews

| | | |
|------------------|---------------------------------------------------------------------------------------------------------------|----------------------------------------|
| Date | | 9/28/2017 |
| East Bank | | Adrian Petetant - Leadman |
| | Grass Tractors | (504) 376-3618 |
| | cutting in destrehan areas 5,6,7,8,9, from 6:30to4:00 | |
| | Grounds Keepers | |
| | cutting and weeding in montz and norco areas 1,2,3,4,5,6 from 6:30to11:00 areas 7,8,9,10,11, from 11:30to4:00 | |
| West Bank | | Jim Lumar - Senior Grass Cutter |
| | Grass Tractors | (504) 908-2276 |
| | cutting in killona on off road areas | |
| | Grounds Keepers | |
| | cutting and weeding in south fashion and fashion blvd on river road ama area and lakewood area | |

PUBLIC WORKS CARPENTER CREW

DATE 10/2/17

CARPENTER

MARK EDWARDS

ASHTON WHANN

W / O #

LOCATION / ADDRESS

E-17-35042

105 & 115 JUDY CT., MONTZ

E-17-35035

549 EVANGELINE RD., MONTZ

DESCRIPTION OF WORK

FORM & POUR 2 STREET CATCHBASIN TOPS

WRECK FORMS

JASON FRICKEY

RICHARD TRACY

W-17-32409

600 GREGORY DR., LULING

FORM & POUR NORTH HALF STREET PANEL

CHECK JOBS

W-17-33972

HACKBERRY CANAL, (END OF CANAL ST)

BUILD HEADWALL

E-17-34268

PLANTATION DR., DESTREHAN

REPLACE STREET PANEL & 4 CATCHBASINS

E-17-34970

150 WIDGEON DR. @ SEALY BUS. CENTER

REPAIR BROKEN CATCHBASIN

E-17-34971

JAMES DR. @ RANDA CORPORATION

REPAIR BROKEN CATCHBASIN BY DRIVEWAY

ORMOND WEER DESTREHAN

FORM & POUR AROUND GATE VALVE

Employee Training

- Generator Maintenance Training
- Delgado Milwright Training

Public Works Organization Changes

- Asset Management
 - Asset tracking
 - Work order development
 - Preventive Maintenance
 - Repetitive failures
 - Root cause analysis
 - Mitigation

RCA Problem Statement

Step 1. Define the Problem

| | | | |
|----------------------------|----------------------------|-----------------------------|-----|
| What | Problem(s) | Failure to Start | |
| When | Date | August 12, 2017 | |
| | Time | 6:00 PM | |
| | Different, unusual, unique | | |
| Where | Facility, site | Old Kellogg Pump Station | |
| | Unit, area, equipment | Pumps #1 and #2 not working | |
| | Task being performed | | |
| Impact to the Goals | | 0 | |
| | Safety | | |
| | Environmental | | |
| | Customer Service | | |
| | Regulatory | | |
| | Production/ Schedule | | |
| | Property/ Equipment | Pump out of service | |
| | Labor/ Time | | |
| | | This incident | \$0 |
| | Frequency | | |
| | | Annualized Cost | \$0 |

RCA Logic Tree

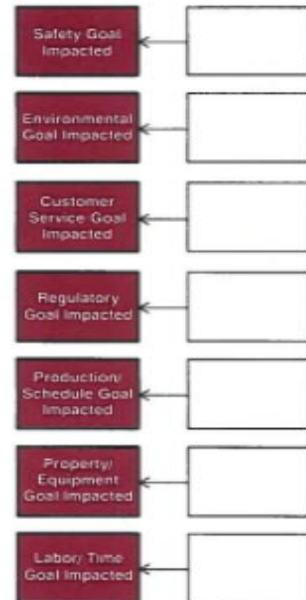
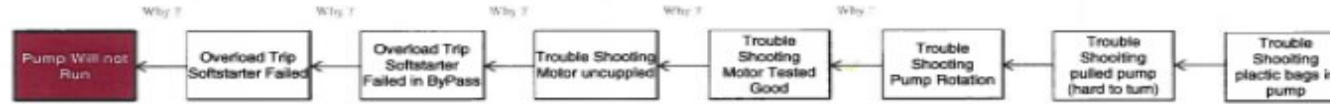
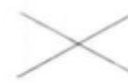
Failure to start - Pumps #1 and #2 not working

Step 2, Analysis

Cause Map



AND
OR
AND/OR



RCA Mitigation Action

Step 3. Solutions

Corrective Actions to be implemented

Since solutions control specific causes, every action item (solution) should correspond to a cause from the Cause Map. This provides continuity from the analysis to the action items. Only those causes with action items (solutions) are listed in this table.

| No. | Action Item | Cause | Owner(s) (Names) | Date Due | Status- Completed | Notes | Verification (Check of effectiveness) |
|-----|-------------------------------|----------------------------------------------------|---------------------|------------|----------------------|-------|---------------------------------------------|
| 1 | Install Debris Basket in sump | Pumps #1 and #2 not working due to plastic bags | Chris Tregre | 12/31/2017 | | | |
| 2 | | | | | | | |
| 3 | | | | | | | |
| 4 | | | | | | | |
| 5 | | | | | | | |
| 6 | | | | | | | |
| 7 | | | | | | | |
| 8 | | | | | | | |
| 9 | | | | | | | |
| 10 | | | | | | | |

Pump Out of Service

- List of pumps out of service with current condition Sept 26th.
- Paradis 30" pump. Pump installed and back in service.
- Old Kellogg 8" pump. Pump installed and back in service.
- Hahnville High 16" hydraulic pump. Pump installed and back in service.
- Cousin pump #8, 48". Flywheel installed and pump back in service.
- Destrehan#1, pump #3: The pump is currently being repaired by PSI and is expected back in 9 weeks. No capacity issue.
- Willowdale pump #2: The parts for the gear box are expected within the next 4 weeks. The parts will be installed when received. No capacity issue.
- Sunset pump #2: The repairs to this pump are expected to be completed and back to us by the end of October. Two 36" hydraulic pumps are the back up for this pump until it is reinstalled.
- Oakland 18" pump: a discharge pipe problem exists with this pump. It can be operated if an emergency occurs. We are currently scheduling to slip line this pipe to resolve the issue. BLD has the project.
- This report covers all pumps which have been recently repaired and put back into service and those which are still out of service at this time.

Pump Out of Service Board

| location | station | pump | out of serv | reason | Pump mitigation | capacity | due | root cause a | RCA mitigation | completion |
|-----------|-------------|------|-------------|-----------------|------------------|----------|------------|--------------|-------------------|------------|
| Destrehan | destrehan 1 | #5 | 8/17/2017 | failure | station capacity | 100% | 12/30/2017 | 9/5/2017 | bar screen repair | |
| Norco | engineers | #2 | 8/21/2017 | bearing faliure | spare pump | 100% | 1/17/2018 | no | | |
| Kellogg | Mimosa | #1 | 8/25/2017 | bearing faliure | replaced | 110% | 10/25/2017 | 9/5/2017 | screen box | |
| Kellogg | Mimosa | #2 | 8/25/2017 | bearing faliure | replaced | 110% | 10/30/2017 | 9/5/2017 | screen box | |

Pump Out of Service Board

[illegible]

2017 Projects

- Roads and Drainage - \$7,000,000
- Wastewater - \$8,000,000

Projects

2017 Roads and Drainage \$7M

- Highland Estates/Engineers Canal Shoring
- Hackberry Canal cleaning and Shoring
- Dunleith Canal Ph 5 and 6
- Mimosa pump station
- Parishwide Telemetry at Pump Stations
- Drainage Gate US 61 at Prescott
- East and West Plantation Road conveyance
- US61 conveyance

Projects

- Ormand Interior Drainage Impacts
- Cypress Lakes Retention
- Schexnayder Pumps station Upgrades
- Cortex Pump station rebuild
- Sunset Pump station pump addition and rebuild
- Wade Street drainage improvements
- Pine Street culverts improvements
- Destrehan I improvements
- Ama Pump Station
- Engineers Canal Upgrade

Project Development

61 Internal planned projects to be developed, prioritized, managed, and implemented.

| | |
|----------------------------------------------------------------------------------------|-------------------------------------------------------------------------|
| Project | Location |
| Install 500' of subsurface | 1114-1232 E. Harding, New Sarpy |
| Clear trees and excavate new canal | Railroad Ave. to Engineers Canal, Norco |
| Replace single 48" culvert to 2-48" culvert | Parish Line ditch, Montz |
| Replace and reset on grade first 2 culvert crossings | West Side of Thoroughbred Ave., Montz |
| Sweep / Dig out Coulee Canal | from Thoroughbred Ave. to sub surface culverts on Evangeline Rd., Montz |
| Install Sheet Piles | 201 Country Cottage along ditch bank, Montz |
| Clear trees | between KCS and CN R/R from Riverbend to Parish Line, St. Rose |
| Dig new ditch on Entergy ROW | between KCS and CN R/R, Montz |
| Line rotten culverts | Ormond Center Parking Lot |
| | |
| Short-term repair project discharge pipe | Oakland Pump Station |
| | |
| Long-term pipe replacement project | Oakland and Fairfield Pump Station |
| | |
| Evans-Graves engineering study to install pumping to solve the Ormond flooding problem | Ormond |
| Digging the Canal | Hackberry Canal |
| Weir in Ormond | Ormond |
| Upper Guidelevee Canal | |
| Cleaning the Hahnville Canal | Hahnville |
| Ama Pump Station | Ama |
| Clean Cortez Canal | |
| Willowdale intake canal levee | |

| | |
|------------------------------------------------------------------------------------------------------|-------------------------------------------------|
| Sugarhouse Road Canal | |
| Install culverts coulee | Montz |
| End of Court House Lane | |
| Installing culverts coulee | Montz |
| 40 Arpert Canal | Hahnville |
| Clearing trees from the R/R right of way | Along Rail Road Ave., Norco |
| Sweeping and upgrading drainage on Crespo | St. Rose |
| Replacing bad culverts | Troxclair Ln, New Sapry |
| Change out bad culverts and sweep ditch to center ditch | Behind 42 and 44 Elmwood, St. Rose |
| Improve Ormond cross ditches | Destrehan |
| Install subsurface drainage on Plantation | Across from Elementary School, Destrehan |
| | |
| Install subsurface drainage along tracks because of failing ditch banks | From River Village to Ormond Village, Destrehan |
| | |
| Install subsurface in the center ditch of Turtle Pond where acess is limited and the bank is failing | St. Rose |
| Drainage improvements | Carolyn Dr., New Sarpy |
| Street needs hot mix | 1217 Gassen St., Luling |
| Install culvert under Railroad Ave | End of Both sides of Post Street, Killona |
| Repair Asphalt where sewer repair was made | 1337 Paul Frederick, Luling |
| Change out culvert (driveway) washing away | 507 Kennedy St., Ama |
| Change out culvert (driveway) washing away | 505 Kennedy St., Ama |
| Change out culvert | 503 Kennedy St., Ama |

| | |
|------------------------------------------------------------------------|----------------------------------------------------------|
| Dig Ditch and change out culvert | 325 Kennedy St., Ama |
| Replace collapsed culvert | 55 Chestnut Pl, Luling |
| Dig Ditch and change out culvert | 379 Marcia Dr., Luling |
| | |
| Clean swale between the up railroad track and the nola pump station | Behind Evelyn Dr., Luling |
| Replace asphalt crossing | Up the bayou road by old DeJean store, Des Allemands |
| Blow culverts and clean out ditches of debris | Old Spanish Trail - Mosella, Paradis |
| Change out collapsed culvert with larger culvert | LeBlanc Lane, Bayou Gauche |
| Clean out any fill, washout, or sedimentation | Behind 137 Bayou Estates Drive, Bayou Gauche |
| Repair potholes | Entire Length of Savoie Lane, Des Allemands |
| Clean out ditch on right hand side of Dixie Drive | From LA 306 to Canal No. 10 on Dixie Drive, Bayou Gauche |
| | |
| Please inspect the culvert for under size, blockage, or other issues | 193 Mitchell Lane, Des Allemands |
| Patch the failed asphalt at the sewer manhole | Wisner Street next to Zydeco's, Paradis |
| Repair broken-up roadway | Up the bayou road, Des Allemands |
| | |
| Inspect/Clean culverts and ditches on south side of Matthew Drive | From first street to LA 306, Bayou Gauche |
| Clean the ditches | Vicinity of 114 Heather and Intersecting Streets, Luling |
| Repair Asphalt where sewer repair was made | St. Nicholas and West Heather, Luling |
| Sweep the ditch and blow out all culverts | Ashland Drive, Luling |
| Replace separated culvert under River Oaks | River Oaks Dr. and Hwy 90, Luling |
| | |
| Sweep/Clean the ditches and culverts along the West Side of River Oaks | From Hwy 90 to Primrose Drive, Luling |
| | |
| Sweep Ditches that are blocking water to drain through the golf course | Between 3 and 5 Zee Ann St., Willowdale |
| | |
| Inspect the slope pavement for needed repairs and repair as needed | Avery St., Luling |

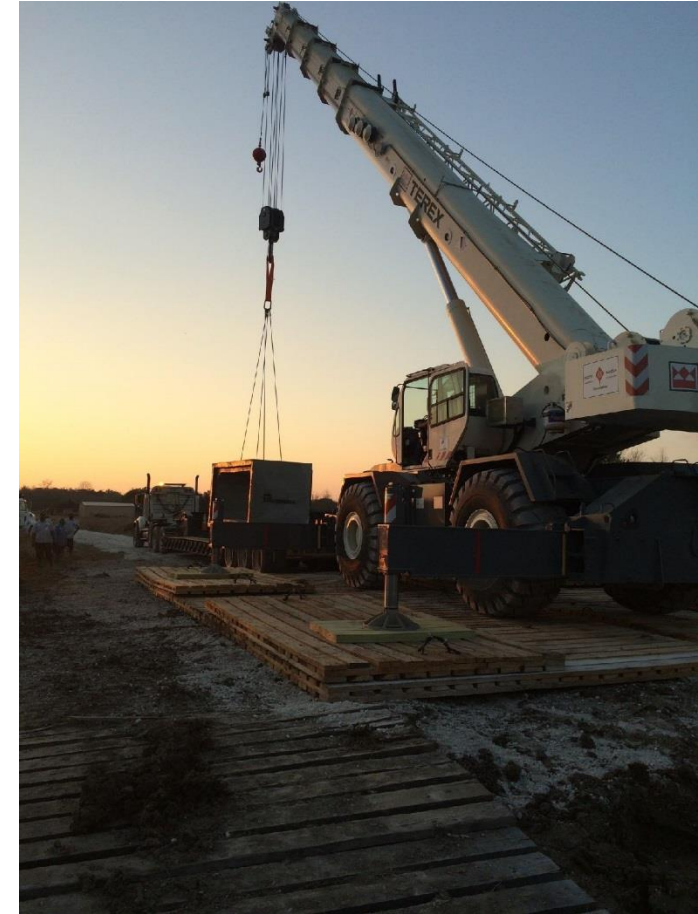
Internal Projects – Canal Cleaning

- Cousins
- Engineers
- Hahnville
- St Charles
- 80 Arpent
- Hackberry
- Cortez
- Upper Guide Levee Canal
- Sunset
- Hymel
- Prescott at Airline
- St Charles Canal

Internal – Canal Cleaning

- Ama – Alice (received)
- Sugarhouse Rd (working)
- St Rose North US 61
- 40 Arpent

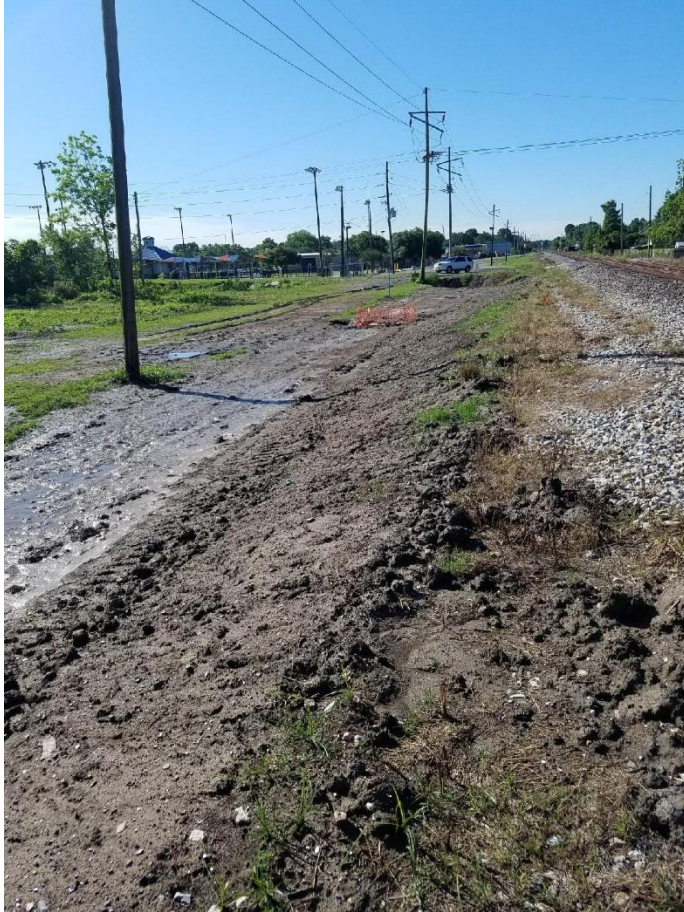
Canal #10 Box Culverts



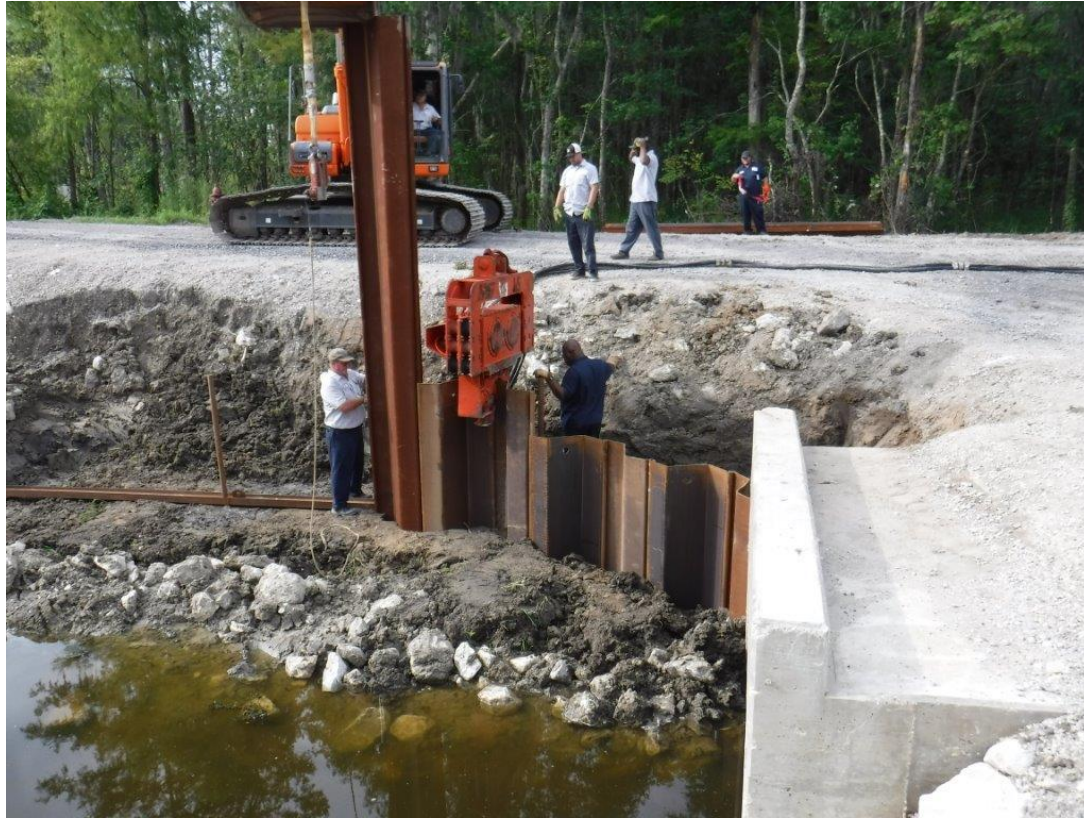
Hackberry Installation of 72" culverts



Railroad Subsurface



Willowdale Sheetpile



US 61 at Prescott Gate



Pump Maintenance



Canal Cleaning



Services



2017 WDSU Rainfall as of 8/31

