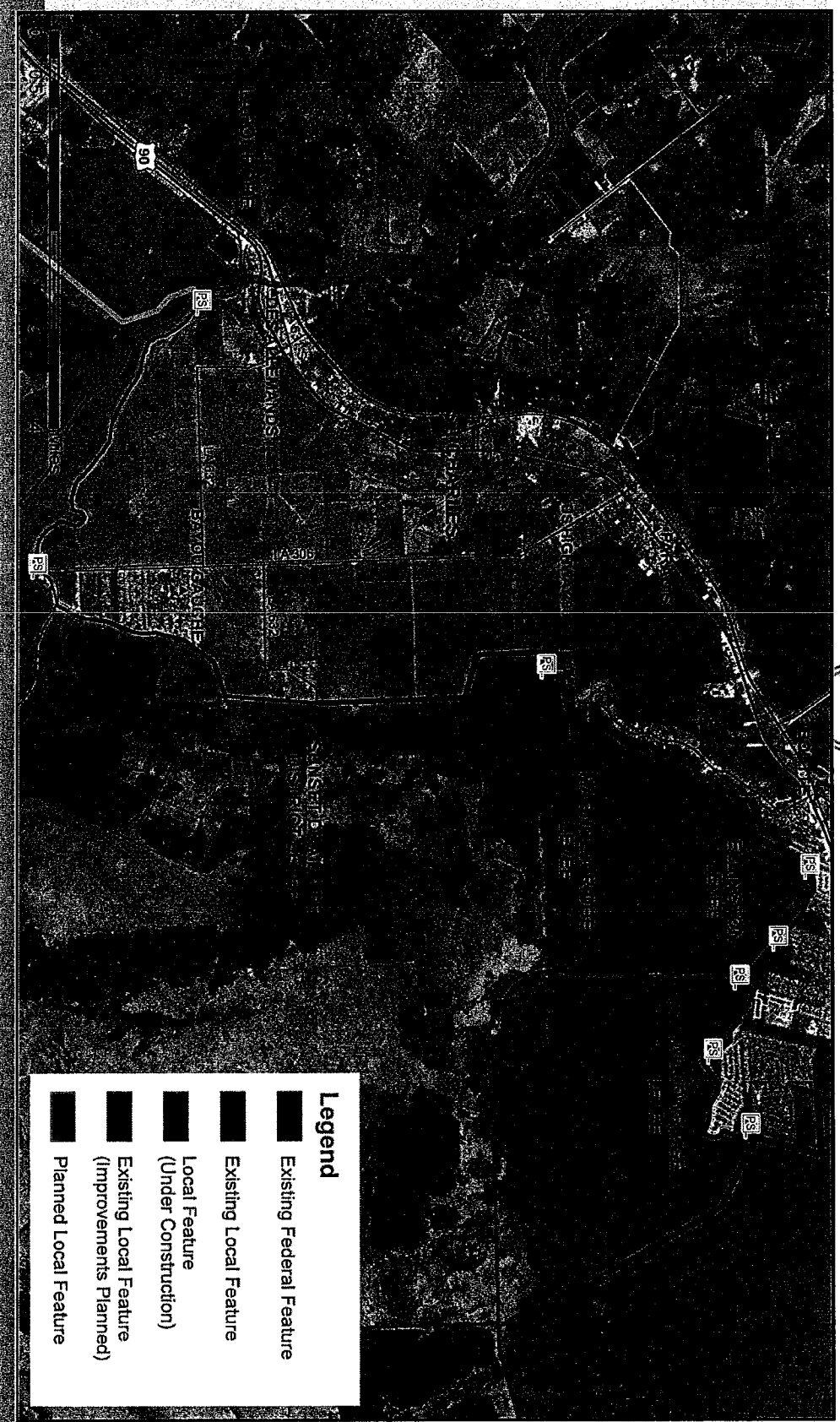


Penny

2014-0280

St. Charles Parish Hurricane Protection Projects

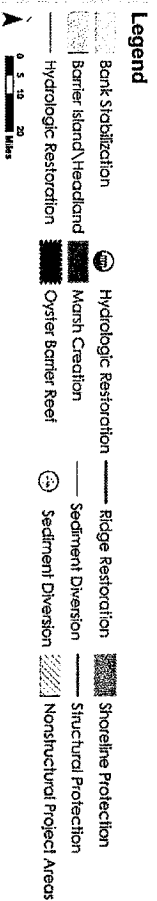
March 22, 2017



Upper Barataria Risk Reduction System



002.HP.06 - Upper Barataria Risk Reduction

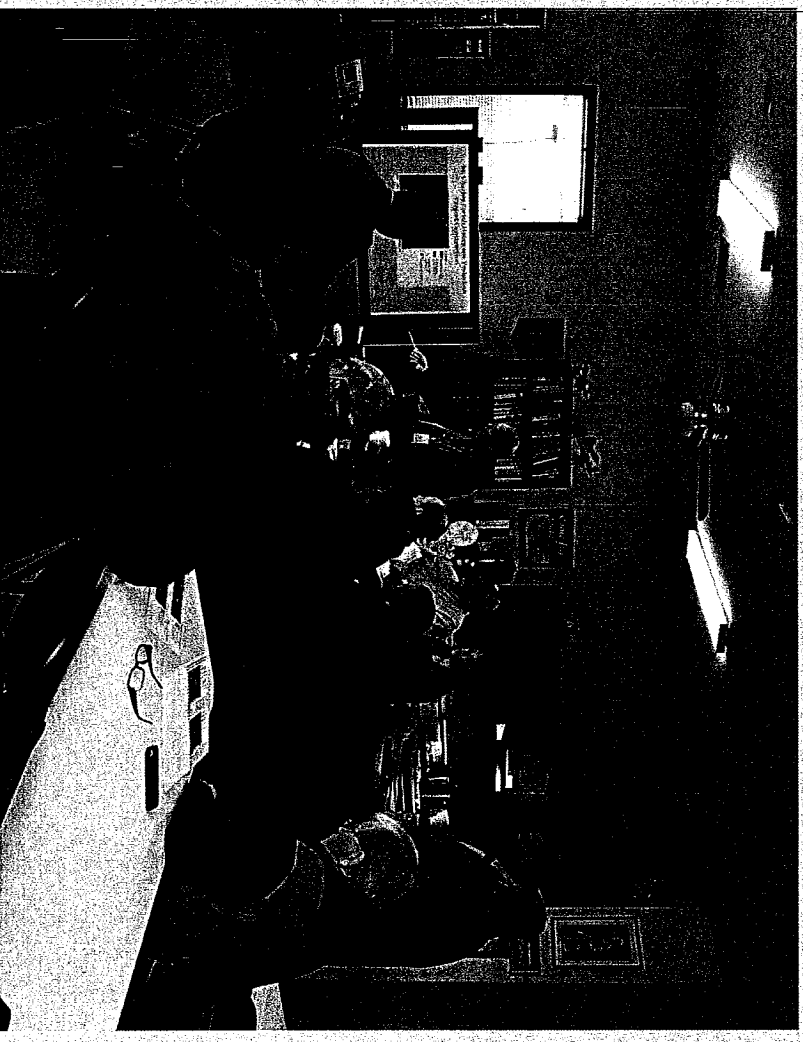


- Included in the Draft 2017 Coastal Master Plan
- Follows Highway 90 alignment and includes the St. Charles Parish West Bank Hurricane Protection Levee system
- Includes 204,300 feet of earthen levees and 8,200 feet of T-walls
- Estimated \$940 Million cost
- If built, WBHPL features would be raised to 100 year level of protection
- CPRA Board to vote to approve Master Plan on April 19 and scheduled for introduction to legislature on April 25

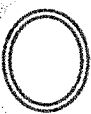
West Bank Hurricane Protection Levee System

CPRA Flyover – January 2017

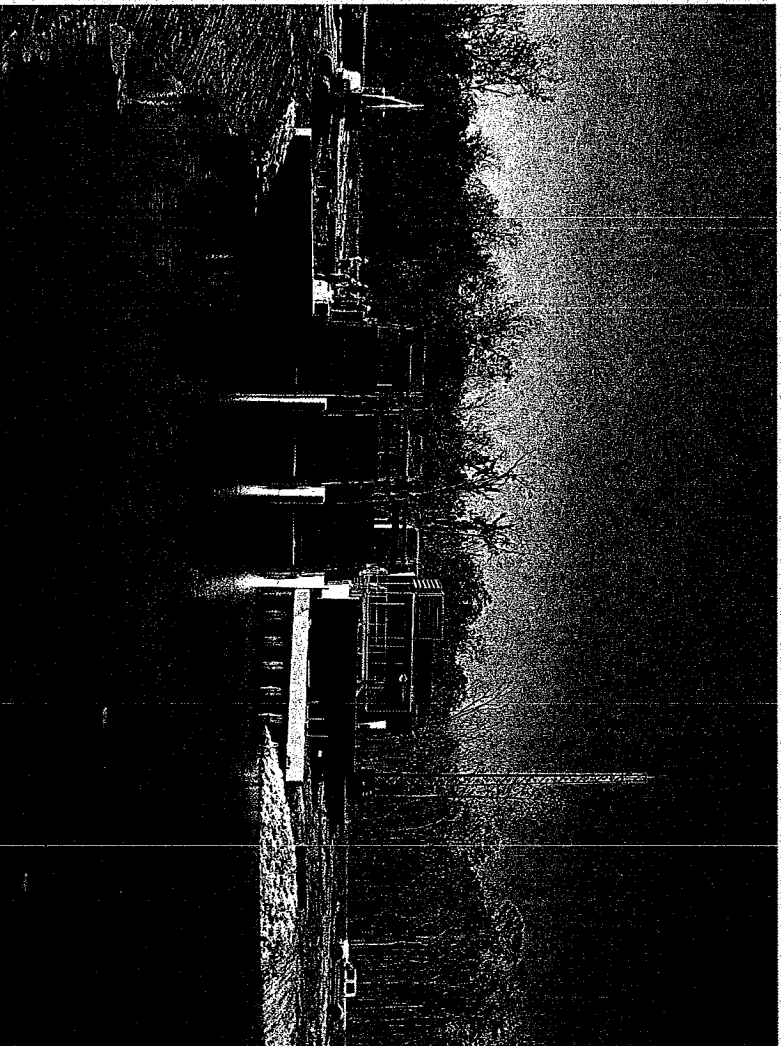
- St. Charles Parish officials gave a flyover tour of the West Bank Hurricane Protection Levee system to CPRA representatives Johnny Bradberry and Michael Ellis.
- This flyover provided an overview of the WBHPL system and its part within the Upper Barataria Risk Reduction system.
- After the flight, CPRA representatives met with Parish representatives to discuss the Parish's efforts to construct and fund the WBHPL system.



St. Charles Parish Hurricane Protection Project Willowridge Pump Station Construction Status

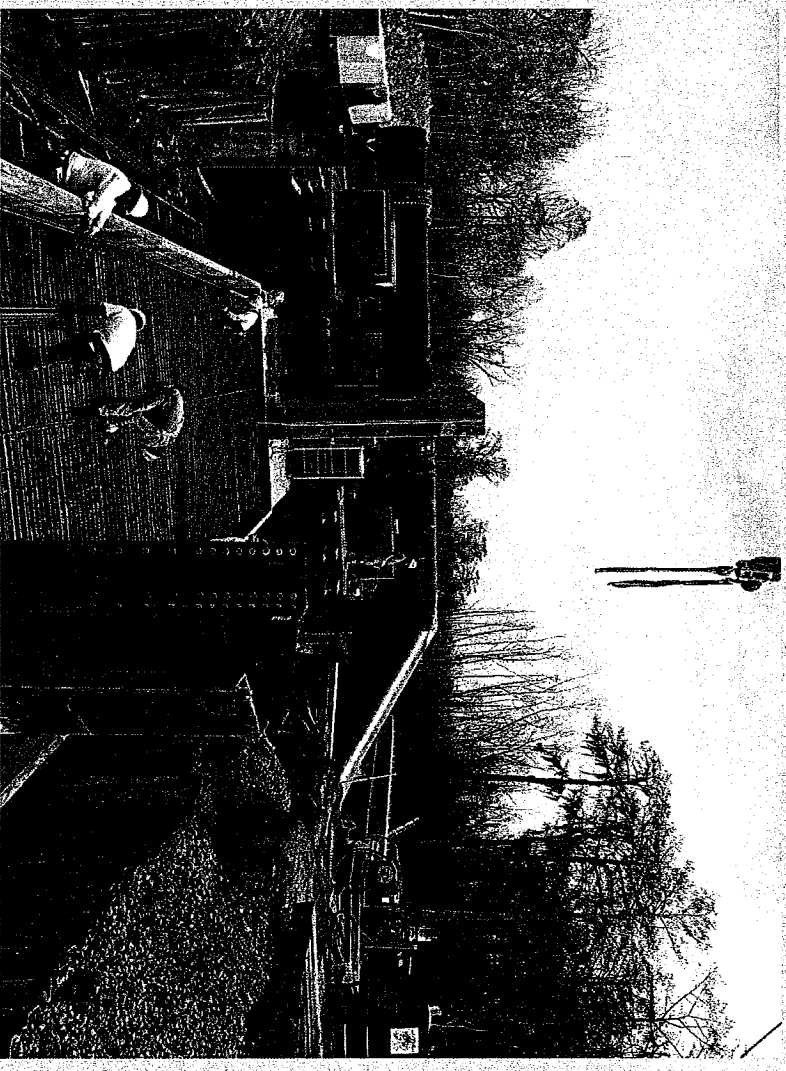


- As of this Meeting, the project is 580 days into the 557 calendar day project.
- The project has an anticipated substantial completion date of April 4, 2017.
- The pump motors should be delivered this week.
- St. Charles Parish and the Engineer have been developing and addressing punch list items over the last several weeks.



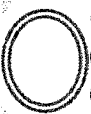
St. Charles Parish Hurricane Protection Project Willowdale Frontal Protection Construction Status

- As of this Meeting we are 518 days into the 485 calendar day project. The anticipated completion date is May 2017.
- The T-Wall in front of the Willowdale Pump Station is complete.
- The Contractor is constructing T-Wall monoliths adjacent to the discharge pipe monolith.
- 1,500 linear feet of levee has been constructed to elevation +7.5 and the contractor has been given authorization to seed and fertilize the embankment.



St. Charles Parish Hurricane Protection Project

Ellington Phase I Levee Construction Status



- As of this Meeting we are 447 days into the 730 calendar day project (60% complete). The anticipated completion date is Fall 2017.
- The contractor has completed the clearing and grubbing operations, is continuing to construct his temporary haul road, continuing to perform canal excavation, and has completed the inspection trench along the project length.
- There are two 6-inch lifts remaining to complete the eastern portion of the levee to +7.5' elevation.

St. Charles Parish Hurricane Protection Project

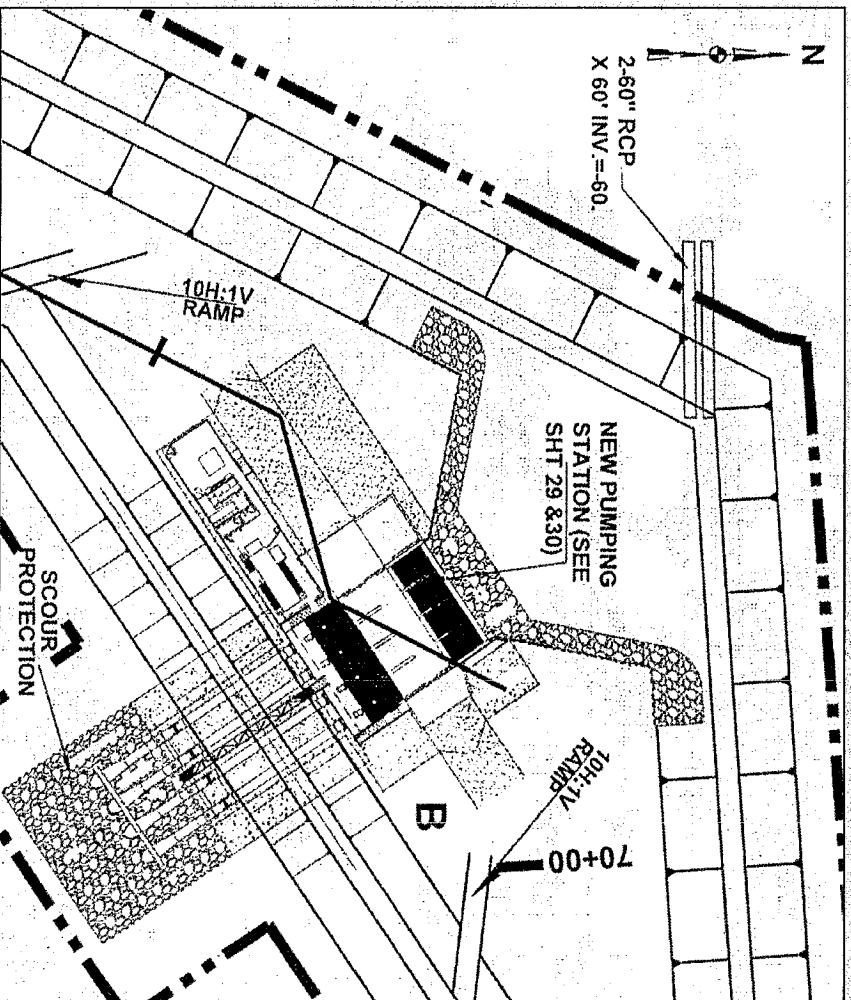
Ellington Sewer Force Main Relocation Status

- The Ellington Sewer Force Main has to be relocated prior to beginning the Ellington Phase II Levee.
- The contract for the relocation of the Ellington Sewer Force Main was awarded to Sealevel Construction, Inc. in the amount of \$930,455.00.
- As of this Meeting the project is 45% complete. The anticipated completion date is July 2017.
- The Ellington Phase II Levee is scheduled to bid in early 2018.



St. Charles Parish Hurricane Protection Project

Ellington Pump Station Status



- The Ellington Pump Station was recommended for inclusion in the FY2017/2018 Recommended Construction Program for DOTD Statewide Flood Control (SWFC) funding.
- Public hearings for the Statewide Flood Control Program projects will take place in early April.
- Eligible to receive up to \$6.3 million in SWFC funding.
- The project is scheduled to bid in 2018.

-

St. Charles Parish Hurricane Protection Project

Sunset Servitude Acquisitions



- To date, the Parish has acquired **18 of 30** levee servitude parcels from **27** impacted landowners.
 - Closings for **two** parcels have been scheduled following successful curative title efforts.
 - Landowners have accepted offers for **two** more parcels, which are pending curative title work.
 - **One** parcel is going through a mobile home relocation process. Offer still pending.
 - **Two** parcels have been recommended for expropriation and will be filed in April.
 - **Three** parcels are being acquired from Chevron USA, which has accepted the offer. Trying to resolve servitude language acceptable to both parties.
 - The Parish and LBLD are in negotiations with landowners to purchase the last **two** remaining parcels.

