

Hurricane Protection Projects Committee Meeting Presentation

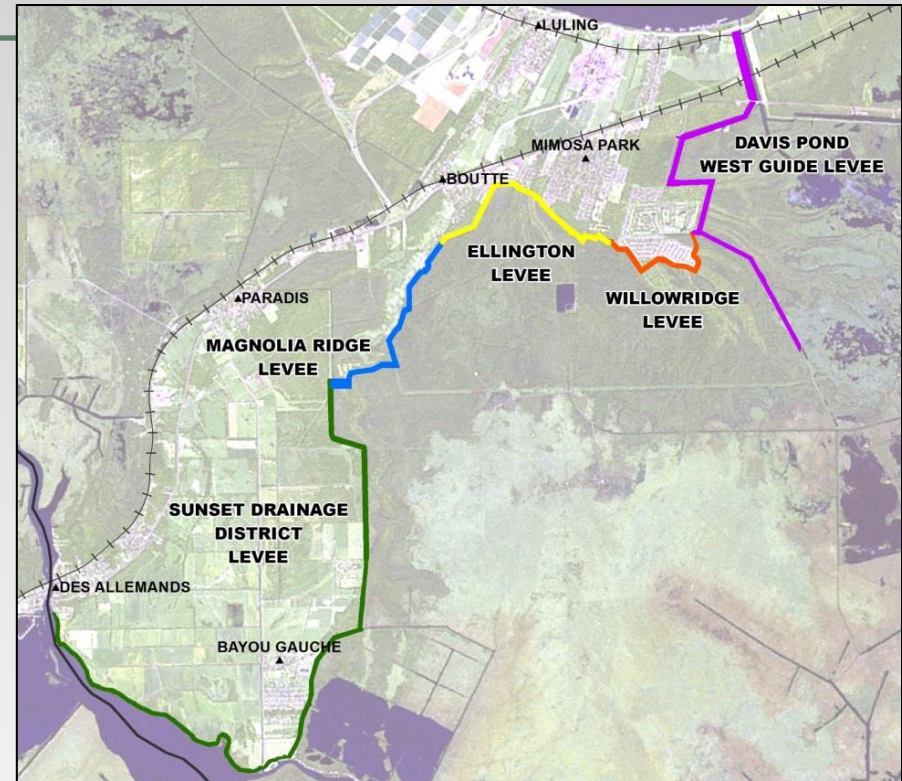
August 4, 2015





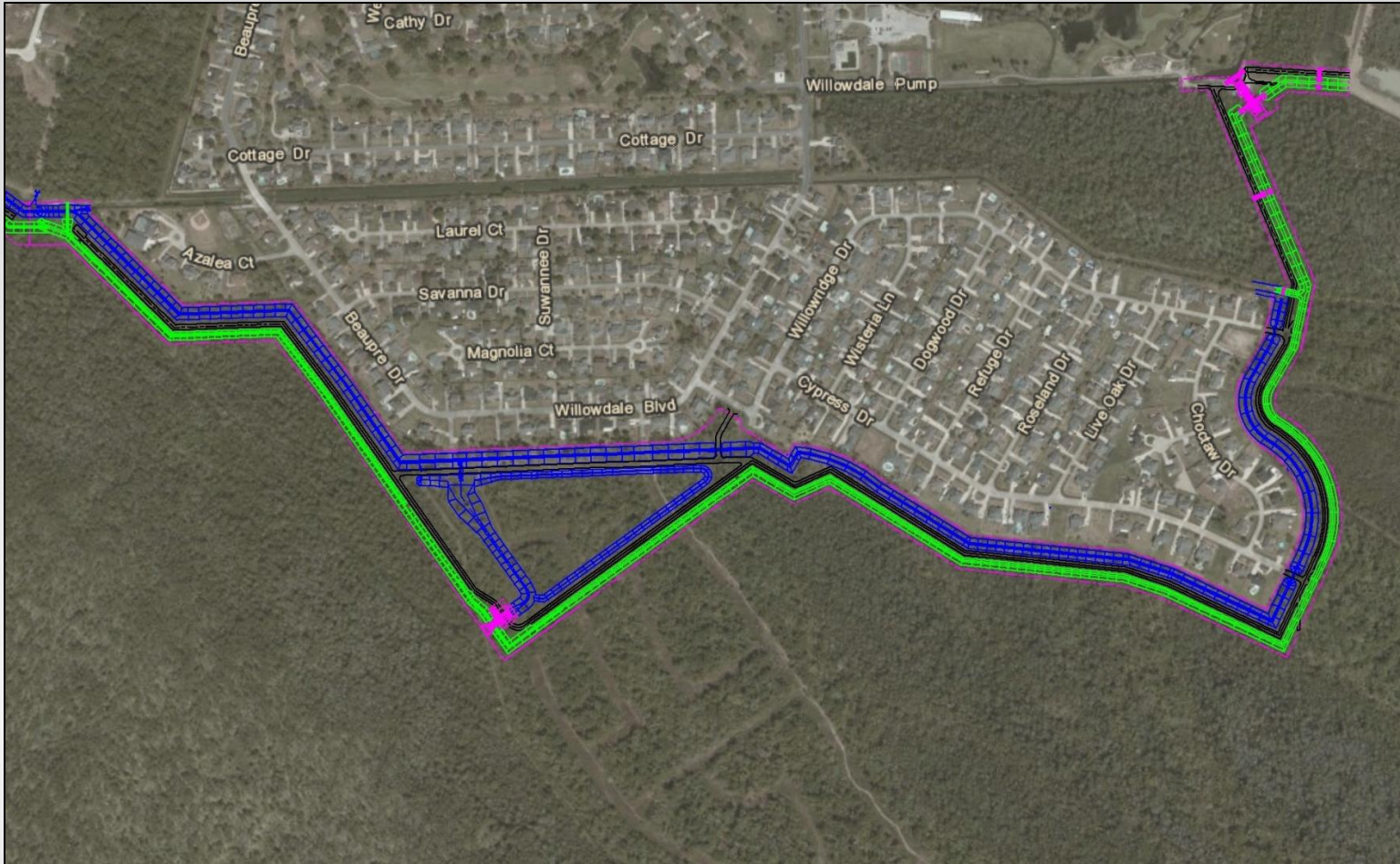
West Bank Levee Overview

- Outer Levee System
 - Davis Pond Guide Levee
 - Willowridge Levee
 - Ellington Levee
 - Magnolia Ridge Levee
 - Sunset Levee
- The State/CPRA had a favorable analysis of for the Hwy. 90 alignment. They determined that for every \$1 of cost, there would be \$2.30 of benefits.





Willowridge Levee & Canals



Willowridge Phase I was deemed substantially complete on July 16, 2015



Updated Levee Construction

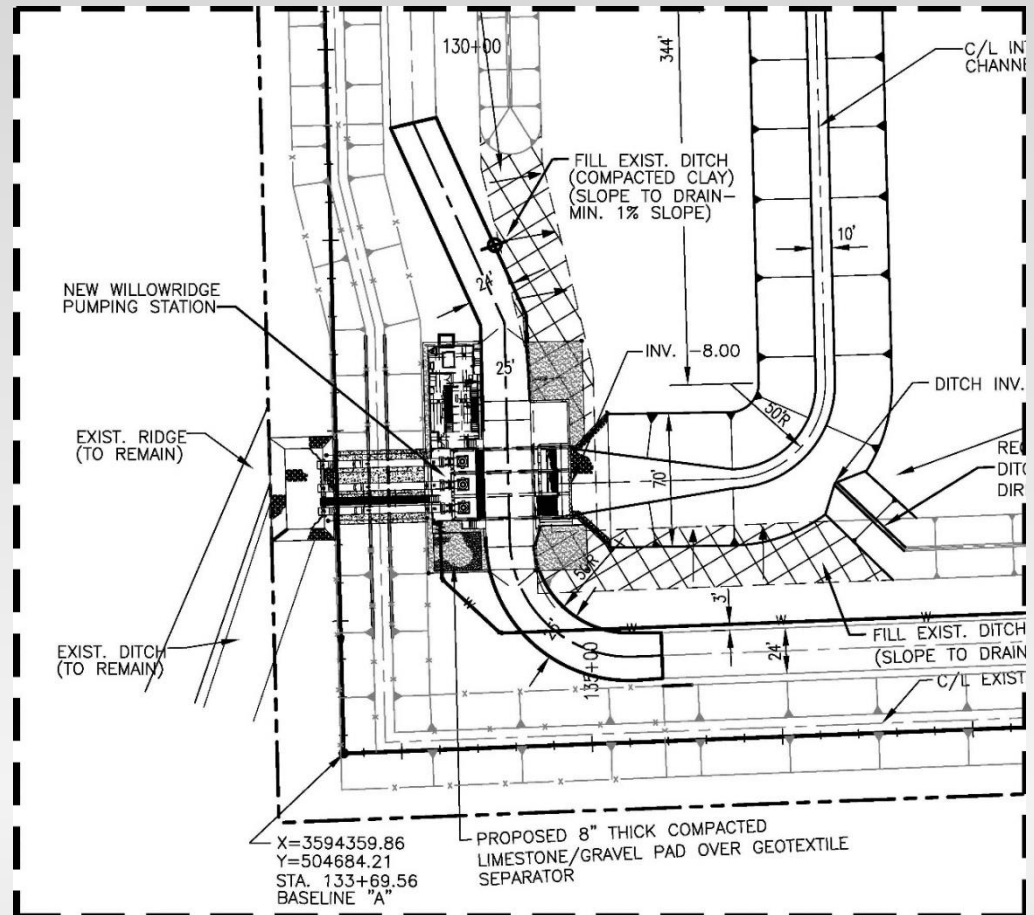


- Representatives from the Public Works Department, the Lafourche Basin Levee District, and LADOTD were in attendance for the substantial completion inspection on Thursday, July 16, 2015.
- The contractor has seeded and fertilized the project site.
- The final inspection will take place in the near future after the contractor has completed all punch list items.



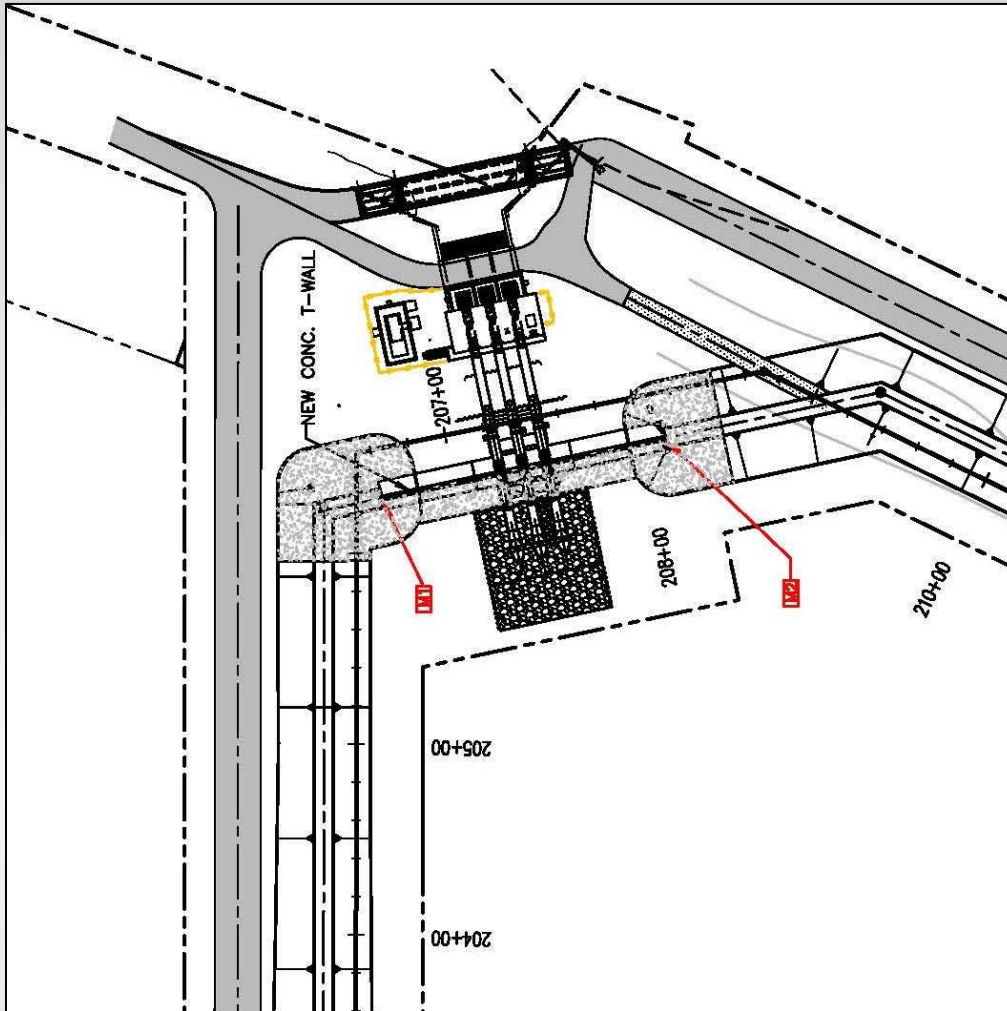
300cfs Willowridge PS

- Bids were opened for the Willowridge Pump Station on June 23, 2015.
- The lowest responsive bidder was Sea Level Construction from Thibodeaux, LA who submitted a low bid of \$5,572,160.
- The pre-construction meeting is scheduled for August 11, 2015 and the issuance of the Contractor's Notice to Proceed is targeted for August 18, 2015. The construction time is 500 calendar days





Willowdale PS Frontal Protection



- Scope includes 1,500 feet of levee at elevation +7.5 and +14.5 T-Wall frontal protection at the Willowdale PS
- Advertisement of this project began on July 23, 2015.
- The bid opening for this project is scheduled for August 25, 2015.



Willowridge Permit Revision

- Modified Permit issued by the USACE on May 27, 2015 and by Louisiana Department of Natural Resources' Office of Coastal Management on June 4, 2015.

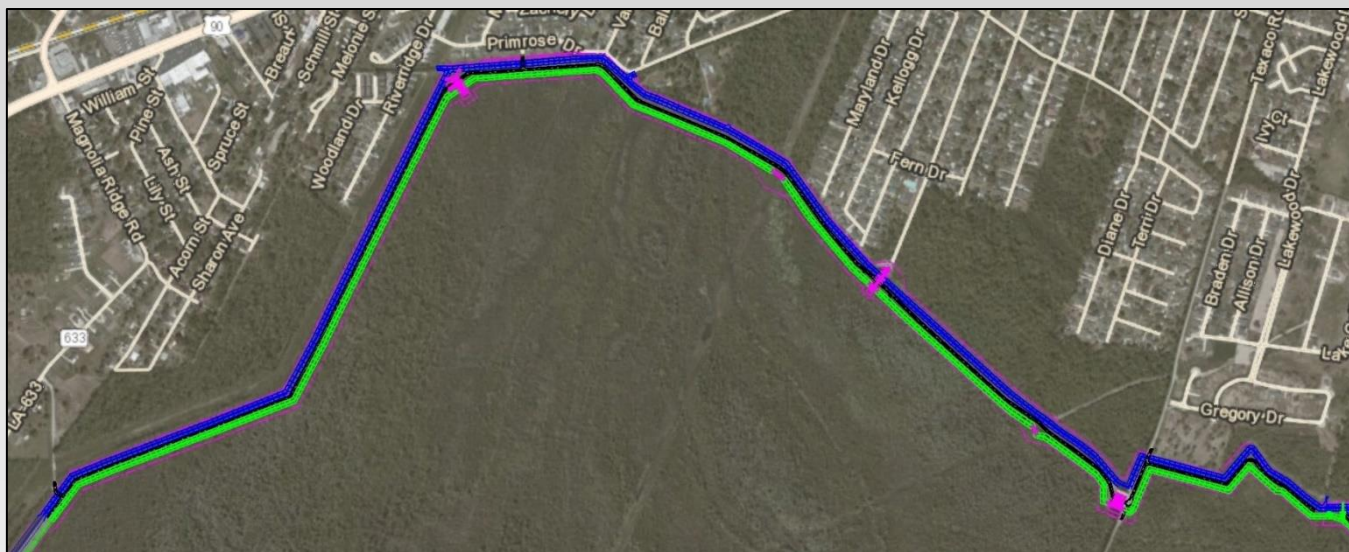
Willowridge Land Aquisitions

- Property acquisitions are complete
- Expropriations completed in June 2015
- Authorization for Entry for final phase was signed by LBLD on July 7, 2015





Ellington Phase I



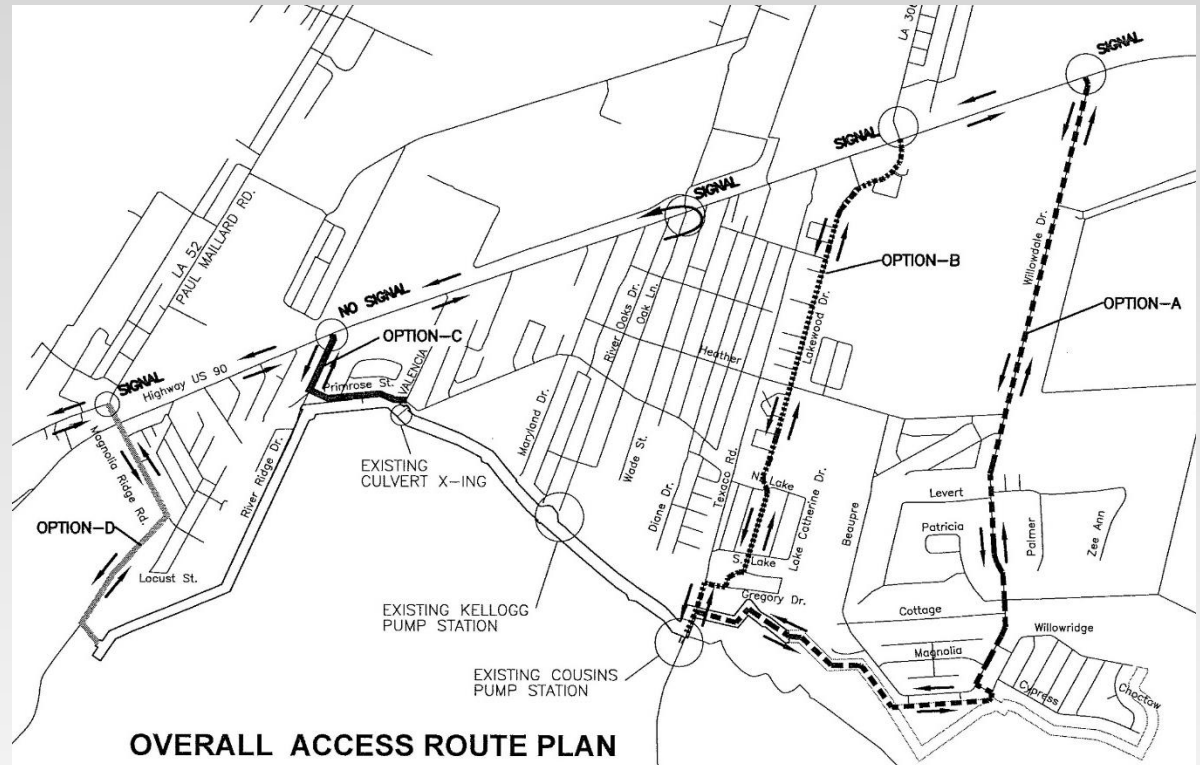
- Project advertisement for a portion of the earthen levee is expected to begin on August 20, 2015, with a bid opening scheduled for September 21, 2015.
- The Scope of this earthen levee project will be basic levee preparation – Clearing and Grubbing, installation of outer dewatering berm, dewatering the entire right-of-way and levee footprint.
- Additionally, work will comprise excavation of the drainage canal, construction of approximately 10,600 lf of the levee and roadway.



Ellington Phase I Access

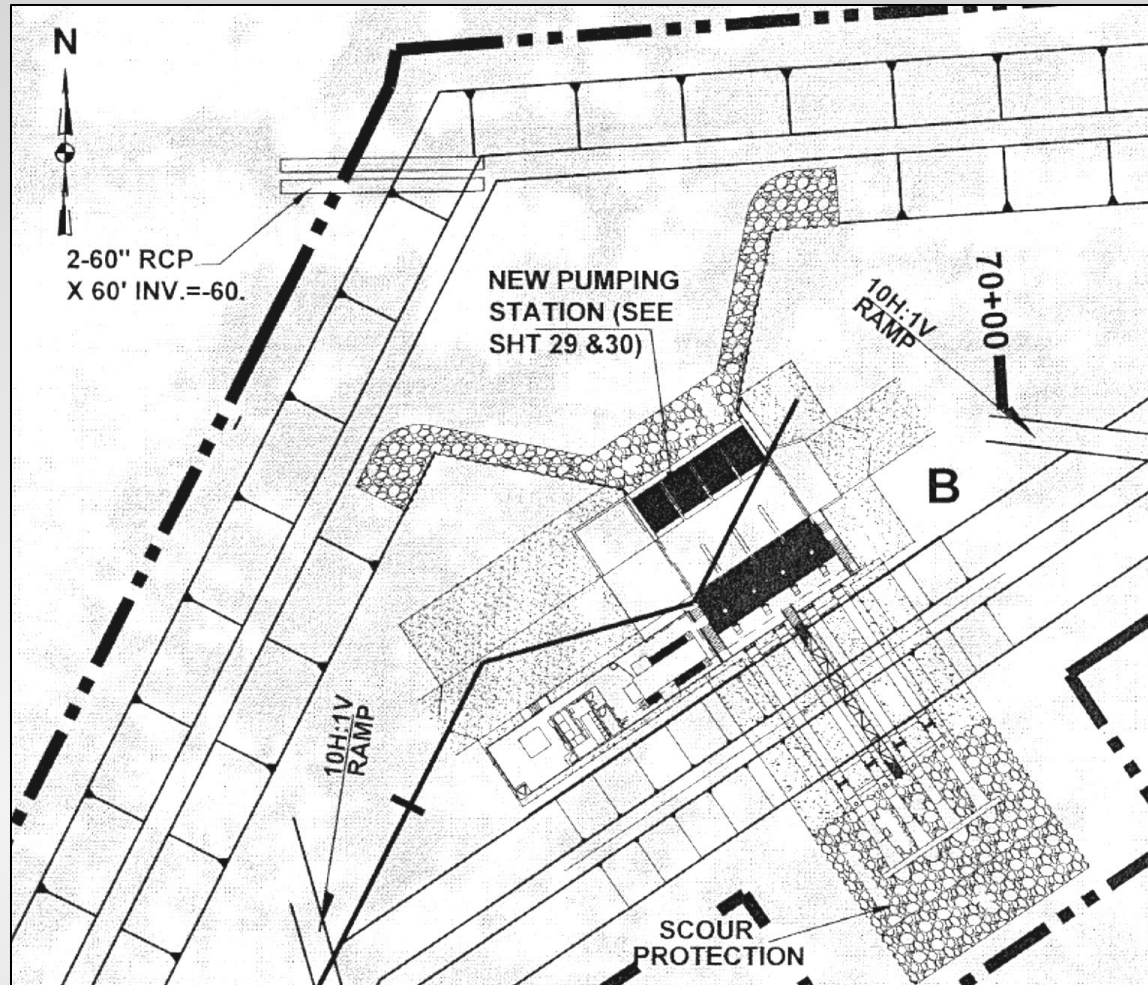
The Contractor will be given four (4) options for access to the Ellington Phase I Project Site:

- **Option A:** from Hwy 90, follow Willowdale Drive to Lafayette Drive to Levee Access Maintenance Road to Texaco Road to Cousins Pump Station
- **Option B:** from Hwy 90, follow Lakewood Drive to Gregory Drive to Texaco Road to Cousins Pump Station
- **Option C:** from Hwy 90, follow River Ridge Drive to Primrose Street to Valencia Drive
- **Option D:** from Hwy 90, follow Magnolia Ridge Road to existing Shell Road





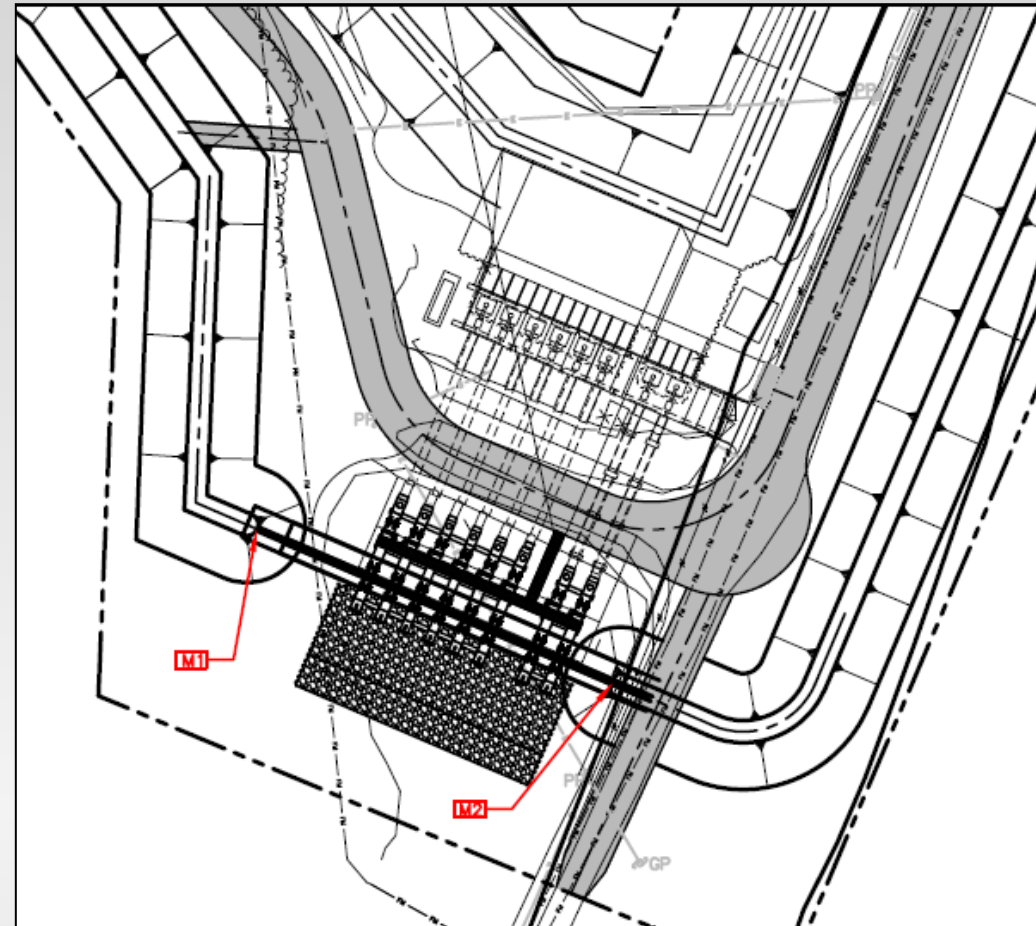
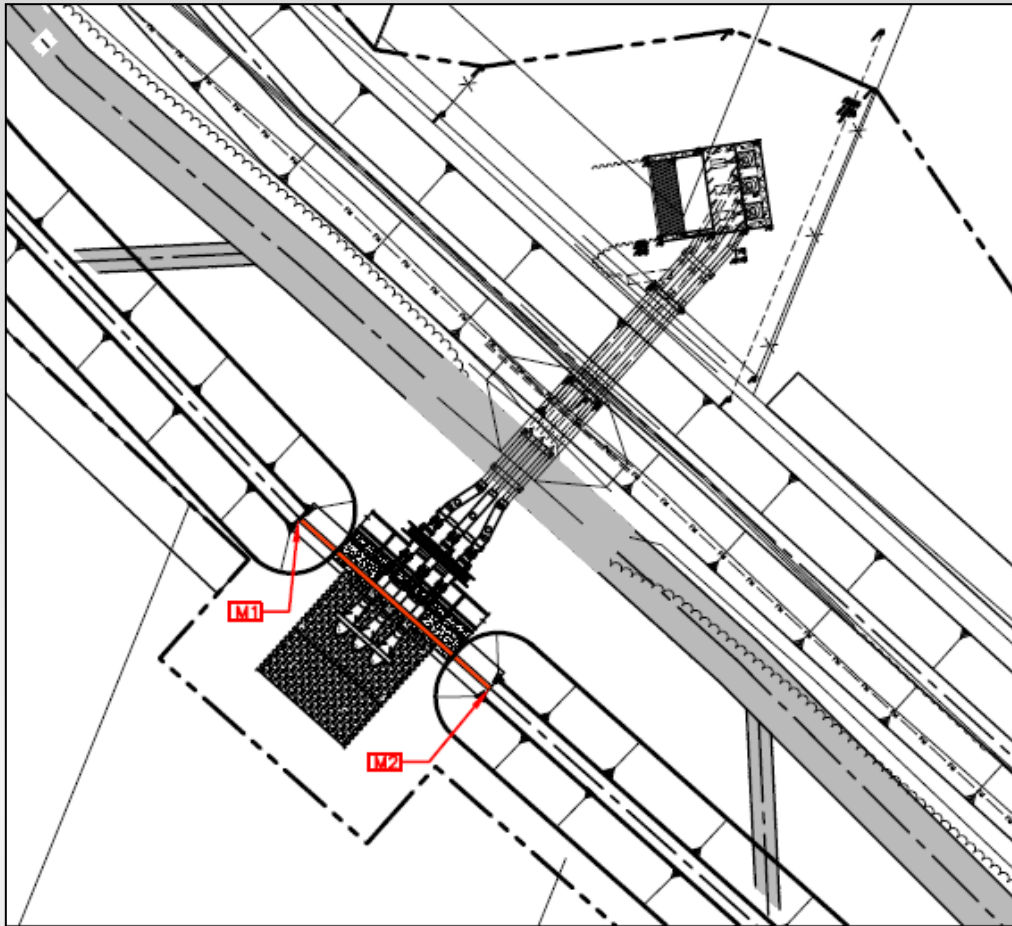
500cfs Ellington PS



- 90% Final design documents for the Ellington Pump Station have been submitted to the Parish for review.



Pump Station Frontal Protection

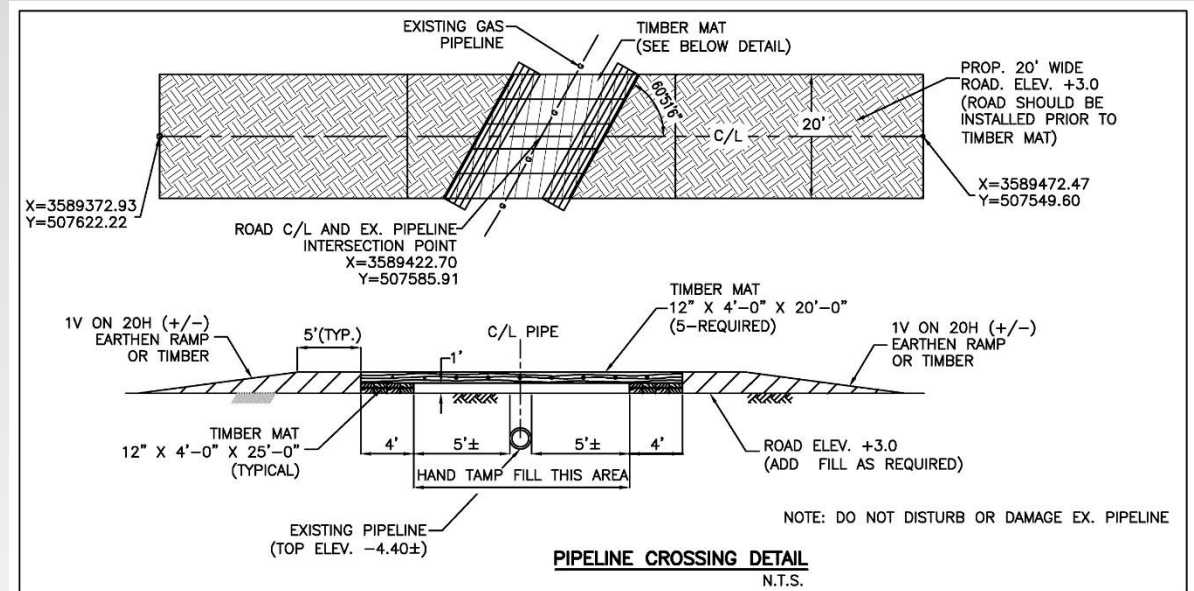


- The 90% Final submittal of the Cousins and Kellogg Pump Station T-Wall Structures has been completed and submitted by the Engineer for Parish review.



Pipeline Crossings – Ellington

- Three (3) pipeline companies impacted:
 - Columbia Gulf
 - Enlink Midstream
 - Chevron



- A Letter of No Objection has been received from Enlink Midstream. A Pipeline Crossing Agreement with Chevron is in the process of being executed. A Letter of Conditional Acceptance has been received from Columbia Gulf.



Modified Permit Authorizations

- Filed for modifications to the existing permit authorizations on December 30, 2014.
- Revisions based on soil boring analysis and increasing hard structure heights to +14.5 feet
- Required compensatory mitigation for 9.3 acres of wetland impacts. The council approved the Corps mitigation plan to preserve 27 acres of cypress swamp and 4 acres of bottomland hardwood at a cost of \$1,395,000.
- All permit requirements have been satisfied. Awaiting issuance of modified permits.





Ellington Land Acquisition

- Lafourche Basin Levee District will vote to authorize three (3) expropriations on August 5, 2015 needed to finalize land acquisitions.
- All willing and positioned property owners have executed servitude agreements with LBLD.
- Pending the three expropriation judgments, two Authorizations for Entry are anticipated later this month.
 - Ellington Levee Phase I
 - Ellington Sewer Force Main (SFM) Relocation





Magnolia Ridge Levee

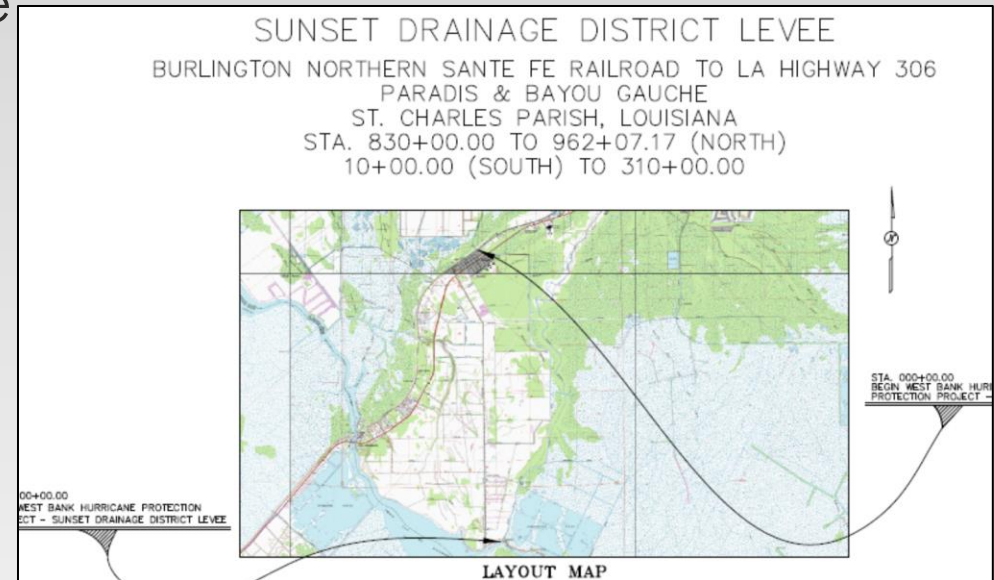


- Topographic surveys by Bayou Country Surveying are complete. The preliminary design of the levee improvements has been initiated.
- All field work for the soil boring has been completed. Awaiting final geotechnical reports from Eustis Engineering.
- The final design of the Magnolia Ridge Pump Station is underway and is scheduled to be submitted to Public Works at the end of this month.
- A task order for the design of the Paradis Canal Control structure has been issued. The Preliminary Design submittal for the structure has been submitted to the Parish for review.
- Public Works has set gated culverts and a hydraulic drainage pump at the end of the borrow canal.



Sunset Land Acquisition

- 95% Final Right-of-Way maps were submitted on July 30, 2015 for review.
- Twenty seven (27) parcels impacting twenty three (23) property owners.
- Acquiring right-of-way for rehabilitation and maintenance of existing levee structures under the LAMP program.
- Appraisal Process has started; expected to take 3 months for completion. Total estimated land payments of \$1,008,596.
- Property negotiations scheduled to be complete by the end of 2015.



RIGHT OF WAY MAP
WEST BANK HURRICANE PROTECTION LEVEE
SUNSET DRAINAGE DISTRICT LEVEE
ST. CHARLES PARISH, LOUISIANA
STA. 830+00.00 TO 962+07.17 (NORTH SECTION)
10+00.00 TO 310+00.00 (SOUTH SECTION)



Sunset Improvements

Sunset Pump Station

- Pump Station is in Final Design Phase and permits are in the process of being renewed.

Sunset Levee Low Spots

- DPW will be hauling clay from the River Bend project site to be stored and used to fill low spots of Sunset levee.
- Two areas have been identified for adding clay along the crown of the levee.



