

9 FEBRUARY 2015

# ST. CHARLES PARISH DEPARTMENT OF PARKS AND RECREATION

---

OUR GOAL IS TO PROVIDE QUALITY RECREATION PROGRAMS, ACTIVITIES, PARKS AND FACILITIES  
THAT ALLOW ALL RESIDENTS OF ST. CHARLES PARISH TO ENHANCE THEIR QUALITY OF LIFE.



# CONSERVATION



PROTECTING OPEN SPACE,  
CONNECTING CHILDREN TO NATURE,  
AND ENGAGING COMMUNITIES IN  
CONSERVATION PRACTICES

# HEALTH // WELLNESS



LEADING THE NATION TO IMPROVED  
HEALTH AND WELLNESS THROUGH  
PARKS & RECREATION

# SOCIAL EQUITY



ENSURING ALL PEOPLE HAVE  
ACCESS TO THE BENEFITS OF  
LOCAL PARKS & RECREATION

# FUNDING SOURCES

---

The Parks Department is supported by a 2.97 mill property tax levy and supplemental funds from the general fund budget.

- **RECREATION CONSTRUCTION FUND**

- ❖ Residential developments currently donate 5% of site area for parks, or pay an in-lieu fee.

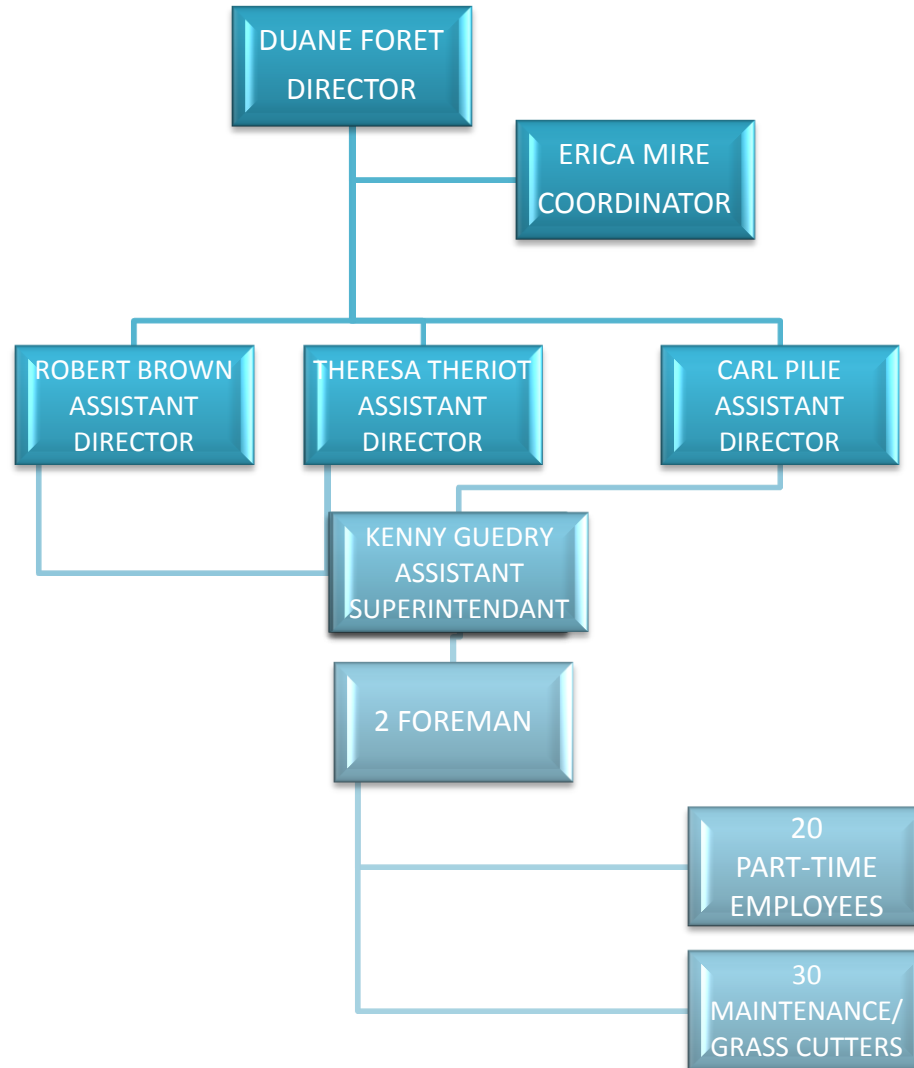
- **GRANT FUNDING**

- ❖ Rathborne Park Phase II



# ORGANIZATIONAL CHART

---

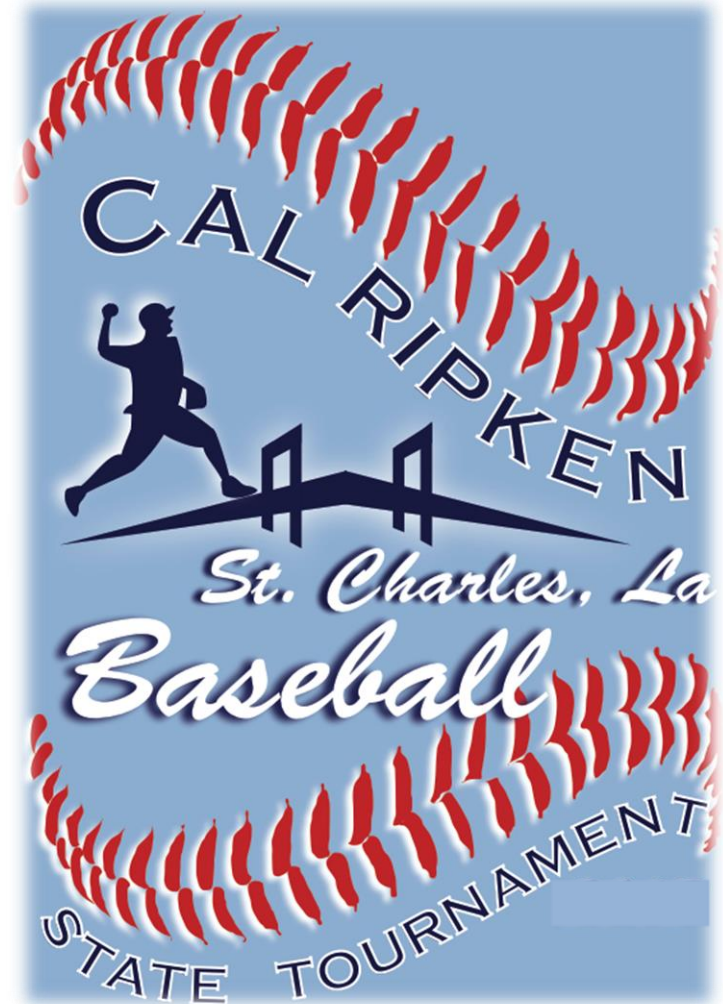


# 2014 HIGHLIGHTS

---

13 & 14 YEAR OLD  
BABE RUTH BASEBALL  
LOUISIANA STATE  
TOURNAMENT

16 TEAMS FROM LOUISIANA



# 2014 HIGHLIGHTS

---

## YOUTH ALL-STARS

- **BOYS**

- ❖ **BASEBALL**

- 11's, 13's & 14's Year Old-  
Babe Ruth State Champs

- **GIRLS**

- ❖ **SOFTBALL**

- 16 Year Old - Babe Ruth State  
Champs & Regional Champs
    - 12's & 14's Year Old – State  
Runner Ups

- **BOYS**

- ❖ **BASKETBALL**

- 9 Year Old - Boys State  
Champs



# 2014 HIGHLIGHTS

---

## 16U GIRLS ALL-STARS WORLD SERIES QUALIFIER





# 2014 HIGHLIGHTS

---

## EAST BANK BRIDGE PARK TENNIS COURTS



Resurfaced, restriped and replaced the nets



# 2014 HIGHLIGHTS

---

## BONNET CARRE SPILLWAY DOCK



Capped pylons for safety of visitors



# 2014 HIGHLIGHTS

---

## MIRACLES TO MILESTONES COMMUNITY BUILD



Motiva Manufacturing Complex, Valero, RCII & Parks and Recreation working together in the community build of the Inclusive Playground set at the East Bank Bridge Park



# 2014 HIGHLIGHTS

---

## MIRACLES TO MILESTONES



COMMUNITY BUILD

The completed playground set sponsored by Hillary Sirmon



# 2014 HIGHLIGHTS

---

## ORMOND COMMUNITY PARK



Spray Park, Playground set, Lighted Walking Path, Pavilion, 2 Ball Fields and Multi-Use Field

# 2014 HIGHLIGHTS

---

## MONSANTO PLAYGROUND



New playground set addition to replace old set



# 2014 HIGHLIGHTS

---

## BOUTTE PLAYGROUND



Replaced playground set, painted pavilions and restrooms



# 2014 HIGHLIGHTS

---

## WEST BANK BRIDGE PARK DRIVE ADDITION



Replaced 4 inch drive with 6 inch concert and wire mesh

# 2014 HIGHLIGHTS

---

## BAYOU GAUCHE PARK BEFORE



Bayou Gauche Park Before



# 2014 HIGHLIGHTS

---

## BAYOU GAUCHE PARK



Replaced playground equipment and pavilion



# 2014 HIGHLIGHTS

---

## WEST BANK BRIDGE PARK FITNESS STATIONS



Installed new outdoor Fitness Stations at the West Bank Bridge Park through United Way grant

# 2015 PROJECTED PROJECTS

---

## EAST BANK BRIDGE PARK FITNESS STATIONS

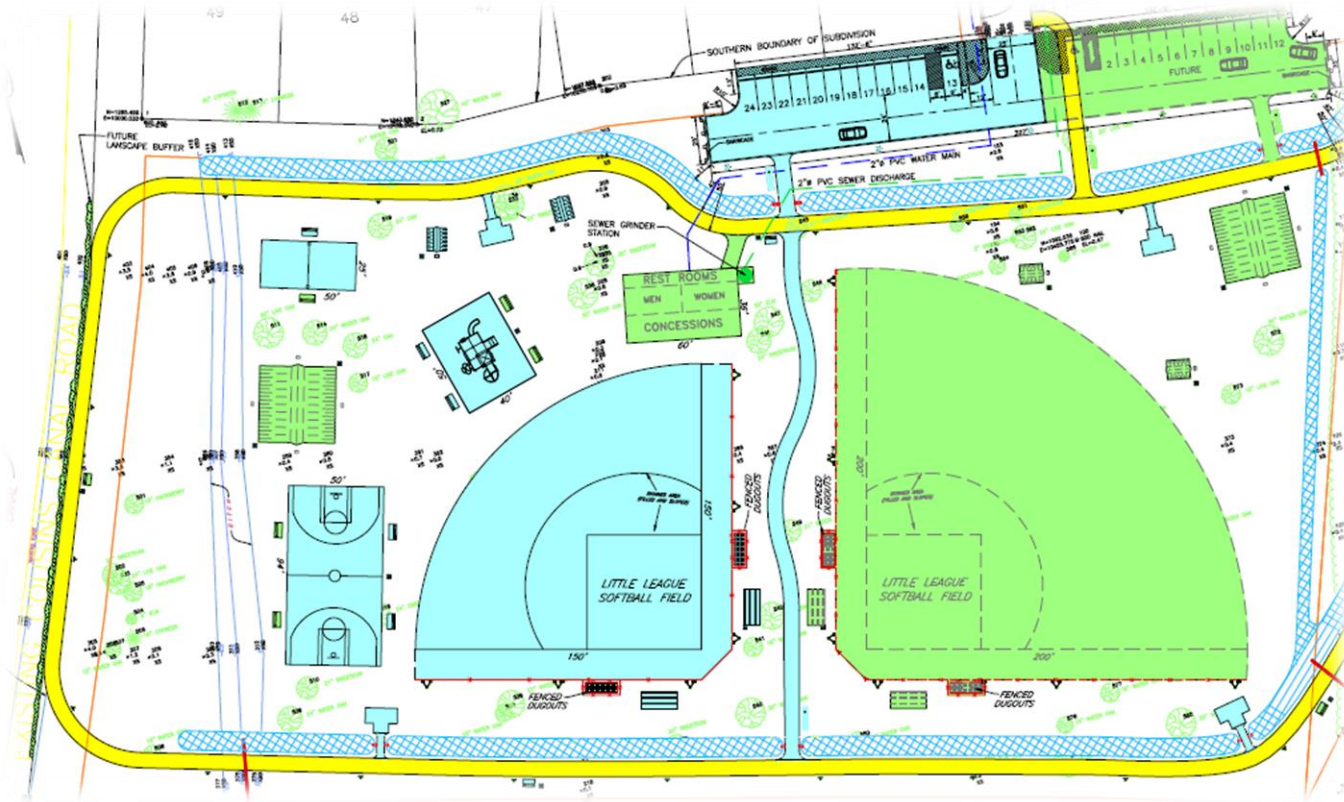


Will be installing new outdoor Fitness Stations at the East Bank Bridge Park sponsored by United Way grant



# 2015 PROJECTED PROJECTS

## RATHBORNE PARK-PHASE II



Additional Ball Field, Lighting, Pavilion, Restroom & Concession Stand



# 2015 PROJECTED PROJECTS

---

## AMA PARK IMPROVEMENTS



Ama Park pavilion paint and replace roof

# 2015 PROJECTED PROJECTS

---

## DES ALLEMANDS PARK



Replace playground equipment



# 2015 ENHANCEMENTS

---

## *Let's All Play* SUMMER CAMP

WILL BE GOING TO 5 DAYS

A WEEK; MONDAY-FRIDAY

\$25,000 SCHOLARSHIP FUNDS FROM UNITED WAY



## SWAMP SCHOOL

WILL BE GOING TO

4 ONE WEEK SESSIONS

# 2015 ENHANCEMENTS

---





# RECOGNITION

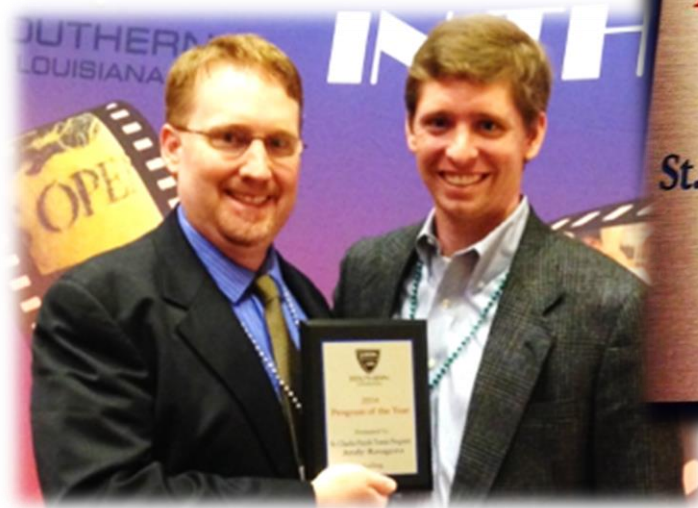
---

## TENNIS PROGRAM AWARD

2014 ST. CHARLES PARISH TENNIS WAS AWARDED

## PROGRAM OF THE YEAR

BY THE UNITED STATES TENNIS ASSOCIATION



# RECOGNITION

---

## VOLUNTEER HOURS

- **COACHES**

- ❖ Practice, Games & Playoffs
  - 46,290 volunteer hours

- **PARISH BOOSTER CLUBS**

- ❖ Meetings, Registration & Concessions
  - 7,954

**TOTAL VOLUNTEER HOURS: 54,244**





EDWARD A. DUFRESNE  
COMMUNITY CENTER

# MISSION

---

TO CREATE A  
POSITIVE LEISURE, CULTURAL  
AND EDUCATIONAL EXPERIENCE  
WHICH WILL ENHANCE THE QUALITY OF LIFE FOR  
ALL PEOPLE IN AND AROUND THE ST. CHARLES PARISH  
REGION BY PROVIDING A BROAD RANGE OF PROGRAMS  
IN THE ARTS, RECREATION, ENRICHMENT AND LIFE LONG  
LEARNING. STRIVING TO CREATE AND SUSTAIN COMMUNITY  
TRADITIONS THROUGH SPECIAL EVENTS, OUTREACH  
ACTIVITIES AND FACILITY RENTALS, AS WELL AS  
BUILDING A COMMUNITY THROUGH  
COLLABORATION &  
CELEBRATION.

# FACILITY USAGE

---

2013	<b>10,276</b> (2 MONTHS; 5,138 AVERAGE PER MONTH)
2014	<b>29,136</b> (12 MONTHS; ONLY 8 MONTHS OF PRIVATE RENTALS; 2,428 AVERAGE PER MONTH)
2015	<b>8,517</b> (1 MONTH)



# 2014 FACILITY USAGE

---

GOVERNMENT FUNCTIONS	<b>189</b> (12 MONTHS; 94% OF USAGE)
PRIVATE FUNCTIONS	<b>12</b> (8 MONTHS; AVERAGE OF 6% OF FUNCTIONS; AVERAGE OF 1.5 PER MONTH)

# RENTAL REVENUE

---

2014	<b>\$17,412.75</b> (8 MONTHS; AVERAGE OF \$2,176.59)
2015	<b>\$6,872.00</b> (1 MONTH)

# IN-HOUSE CATERING SERVICES

---

- ❖ THE EDWARD A. DUFRESNE COMMUNITY CENTER WILL HAVE A MINIMUM OF FOUR EXCLUSIVE IN-HOUSE CATERERS THAT WILL PROVIDE ALL FOOD AND BEVERAGE SERVICES.
- ❖ THE IN-HOUSE CATERER WILL BE RESPONSIBLE FOR PROVIDING ALL FOOD, BEVERAGE AND CONCESSION SERVICES.
- ❖ THE CONCESSIONS AND CATERING CONTRACTS WILL BE SEPARATE.
- ❖ GOVERNMENT DEPARTMENTS ARE NOT REQUIRED TO USE THE IN-HOUSE CATERER, ALTHOUGH IT WOULD BE RECOMMENDED. GOVERNMENT DEPARTMENTS WILL BE REQUIRED TO USE A LICENSED AND INSURED CATERER WHEN BRINGING OUTSIDE FOOD AND BEVERAGE TO THE FACILITY.
- ❖ THE CLIENT WILL DEAL DIRECTLY WITH THE IN-HOUSE CATERER SELECTED FOR ALL FOOD AND BEVERAGE SERVICES.



# 2014 IN-HOUSE CATERING REVENUES

---

VENDING	<b>\$592.83</b> (\$49.40 AVERAGE PER MONTH)
GOVERNMENT	<b>\$3,773.89</b> (\$314.49 AVERAGE PER MONTH)
PRIVATE & SCHOOL BOARD	<b>\$7,903.63</b> (\$658.64 AVERAGE PER MONTH)
<b>TOTAL REVENUE</b>	<b>\$12,270.35</b> (\$1,022.53 AVERAGE PER MONTH)

# IN-HOUSE CATERING PRIVATE REVENUES

---

2014	<b>\$7,903.63</b> (8 MONTHS; AVERAGE OF \$987.95)
2015	<b>\$9,279.00</b> (1 MONTH; 2 FUNCTIONS)

# USAGE

---

FROM NOVEMBER 2013 UNTIL FEBRUARY 1, 2015 THE EDWARD DUFRESNE  
COMMUNITY CENTER HAS ACCOMODATED OVER

**47,929**

IN FIFTEEN MONTHS

2014 EXPENDITURES	<b>\$190,586.54</b>
2014 REVENUES	<b>\$31,746</b> (16% OF TOTAL EXPENSES)

2014 NET = \$294,807 2015 NET = \$268,426



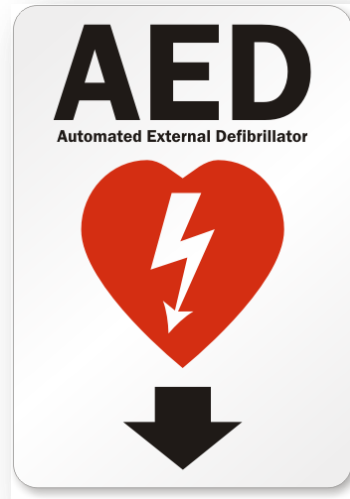
# INSURANCE

---

WE WILL BE ALTERING THE INSURANCE REQUIREMENTS FOR RENTALS IN 2015. WHEN RENTING THE GYMNASIUM OR PARKING LOT, THE MILLION DOLLAR GENERAL LIABILITY CERTIFICATE WILL BE REQUIRED. HOWEVER, WHEN RENTING THE MEETING ROOM(S) OR LOBBY A \$500,000.00 GENERAL LIABILITY CERTIFICATE WILL BE ACCEPTED.

# CERTIFICATIONS & MEMBERSHIPS

---



MEMBERSHIP OF INTERNATIONAL  
ASSOCIATION OF VENUE MANAGMENT



FOOD SAFETY CERTIFICATION

# EDWARD A. DUFRESNE COMMUNITY CENTER

---

